

ADRIAN SATTERLY

Mr Satterly of Cleobury Funeral Services appeared before the Telford Magistrates' Court on March 9th to answer to 20 counts of 'Theft from the person of another'. This was a preliminary hearing, at which details of the 20 counts were read by the clerk of the court, totalling some £5,500 of monies collected at funerals and not paid to the selected charities.

Mr Satterly was told by the presiding magistrate that due to the serious nature of the offences he will face trial at Shrewsbury Crown Court on April 12th and will enter his plea to the charges then. He was allowed unconditional bail.

Advertisements for Cleobury Funeral Services have been withdrawn from the Cleobury Clarion.

A full report of the April trial will appear in our May issue.

ALISON'S MILLION STEPS FOR SEVERN HOSPICE



Look out for this tee-shirt as Alison Andrews pounds the paths to clock up one million steps to raise funds for Severn Hospice.

Alison Andrews' pledge to walk 10,000 steps a day for 100 days to raise funds for the Severn Hospice was off to a great start in March. In eight days she'd recorded 109,614 steps and had gathered local sponsorship from the

companies whose names you can see on the back of her special tee-shirt.

She's taking on the million step challenge as a tribute to her great friend Pat Williams, who died in April 2019 and who raised thousands of pounds for charities in her final years; a very special lady.

You can sponsor Alison to add to the funds for Severn Hospice and their wonderful work. She has a Facebook page: 'Al's 1,000,000 steps for Severn Hospice' where you can follow her progress and you'll find her Just Giving address there if you want to help the cause.

And if you see her out walking, be sure to give her a toot or a wave and spur her on. She's a lady giving time and effort to the memory of a good friend who in her time inspired Alison to take on a challenge for a good cause.

Great stuff, Alison!

I.P.T. GROUND SOLUTIONS

Over 30 years experience

For all pipe installations:

- Sewage • Storm drainage
- Blockage/Repairs • Ditches
- Grass Cutting / Hedge Trimming
- Driveways • Ground clearance

For all your ground needs

Contact Ian on:

T: 07870 384 096

E: ian.ptaylor@yahoo.com

W: iptgroundsolutions.co.uk



Victoria Allen Funeral Services

An Independent Family Business offering a
Personal and Professional Service

Over 25 years' Experience

Competitively Priced

Private Chapel of Rest

Golden Charter Pre-Paid Funeral Plans

Covering All Areas

Home Visits Available

01584 879035

24 Hour Service

8 Charlton Rise, Ludlow, Shropshire, SY8 1ND
www.vallenfuneralsludlow.co.uk
Email: vafs@btinternet.com



The Cleobury Clarion, April 2021

Volume Seventeen - Edition One



*Hobson's special 'Pass The Smile' brew is a real winner.
See Page 7.*



*Peacocks Pantry? Phil and Rosie will welcome you there.
See Page 11.*



*Cleobury Food Bank.
A remarkable, merciful place.
See Page 13.*

And On Other Pages....

- 5 - In Praise Of....
- 9 - The Kites Are Coming!
- 15 - The Clarion Jobs Page
- 17 - Mawley Hall - An Update
- 19 - The Remarkable Janet Moss
- 21 - Stepping Out! Walking News.
- 25 - Philip Dunne MP
- 27 - Strange Times - More Walking.
- 29 - Clee Hill Wildlife Group
- 31 - Bin Emptying Timetable
- 33 - West Mercia Police News
- 35 - Marian Rees Remembers Dogs
- 36 - The May Election
- 37 - The Lacon Childe Lottery
- 39 - Simon Morton on Gardening
- 41 - April in the Wyre Forest
- 43 - Mrs Grumpy
- 51 - The Town Council Report
- 53 - Cleobury Mortimer Benefice
- 55 - Let's Beat the Scammers
- 59 - Local Information

Charlton Interiors

UPHOLSTERY AND INTERIORS

Rosemary Jones 07837 609229
01746 718285
info@charltoninteriors.com
charltoninteriors.com

ALAN PRICE DIRECT TRAVEL

PRIVATE HIRE TRAVEL

AIRPORT TRANSFERS

LOCAL & LONG DISTANCE,

COURIER SERVICE

FRIENDLY & RELIABLE

FULLY COUNCIL LICENSED



Tel: 01584 890014
MOBILE: 0773 3079679



RED HARE

45 HIGH STREET
CLEOBURY MORTIMER
WWW.REDHARESALON.CO.UK

01299 270702

YOUR
HAIR
IS
OUR
BEST
ADVERT

PPD FREE - PARABEN FREE - SULPHATE FREE - CRUELTY FREE

“Red Hare now offers a private hairdressing room. Perfect for those wanting more privacy, peace and quiet“



CLEOBURY CHIROPRACTIC

31 High St. Cleobury Mortimer DY14 8DQ

JS James
Smith
OSTEOPATHS

We offer both **CHIROPRACTIC** and **OSTEOPATHY**,
using gentle methods suitable for all ages.
Appointments available outside of normal working hours.
Both practitioners are fully registered, insured & regulated.

Sue Brown
MA MSc DC MMCA
CHIROPRACTOR

- * BACK PAIN * SCIATICA * POSTURAL PROBLEMS
- * JOINT PAIN * HEADACHES (arising from the neck)
- * Some SPORTS INJURIES

PLUS * **COMPUTER (DSE) WORKSTATION ASSESSMENTS**
* **BACK CLASS** – Weekly exercise class for those with
back/neck pain.

Hands for Heroes
Free Chiropractic Care for War Veterans



iO
THE INSTITUTE
of OSTEOPATHY



01299 519351 / 07932 000028 / 07506 287191

www.notjustaboutbackpain.com

www.jsosteopaths.co.uk

GCC registered
General Chiropractic Council
www.gcc-uk.org

 **General
Osteopathic
Council**
I'M REGISTERED
Registration no. 9254
www.osteopathy.org.uk

THANK YOU

Mandy Smith writes in reply to the moving letter we published in March about one person's experience of the Voluntary Car Scheme:

Thank you for the lovely article in the Clarion this month. My drivers have been working really hard to keep our passengers safe since March including transporting prescriptions and food to those in need. Since January we have been transporting large numbers of patients to Cleobury, Bridgnorth and Ludlow for their vaccinations and I can not believe how they have gone above and beyond as in this case.

All drivers have had their first vaccination and look forward to the second vaccination runs which are just starting.

If anyone needs our help we have a Facebook page now or please ring 01299 666119 and we will let you know who will pick you up and when.

Mandy Smith

Administrator

Cleobury Mortimer Car Scheme

PHISHING

I'm not trying to usurp Nigel Reid's very valuable page about beating scams that come over on email, in the post or just knocking at your door with a likely tale. In fact it was on Nigel's advice that I forwarded an iffy message that told me my monthly payment for car tax had not been made because there weren't enough funds. It was not spelt correctly and I didn't believe it.

So I forwarded the message to report@phishing.gov.uk and got a very prompt reply, thanking me for it. And it went on to tell that in January this year the number of such reports received ran to 4,500,000! These thieves never give up - just remember that when you get a message asking you for money.

BARKING DOGS

Nearly all dogs bark. We have a rescue dog in our household who reacts to people walking down the alleyway or coming to the door. But just a word, maybe a gentle touch, and she's quiet again.

We have had a letter from a reader who finds constant barking from dogs left in the garden while their owners are out has become an intrusive nuisance. The owners being out probably don't realise how noisily distressed the animals become.

Most dogs like company, it's why they greet you so warmly when you come home. But if you lock them out of the house, the place that is their secure home, they can become worried and bark in the hope of attracting their owners. And constant barking is not a good sound for your neighbours to live with.

The solution? Talk to your neighbours, who may not be aware of the noise a lonely dog will make. It's true of most minor matters that begin to irritate that a quiet word and a reasoned approach can solve the matter. Just be good neighbours, in fact.

SILLY BIT

Q: Who led the Pedants' Revolt?

A: Which Tyler

(With acknowledgements to Barry Cryer)



The Oak Boy
TRADITIONAL OAK FRAMING
SINCE 2011
07398 233443

John Caswell
Johnjocaswell@yahoo.com

SERVICES AVAILABLE

<ul style="list-style-type: none">➤ Flooring➤ Manufacturing & fitting doors & windows➤ Kitchens ➤ Cladding➤ Studwork➤ Bespoke Oak Framing	<ul style="list-style-type: none">➤ Landscaping➤ Patios➤ Brick & Stone work ➤ Roofing, Tiling, Guttering➤ General Building➤ Property Maintenance
--	---

Call now for a Free Quotation!



CM BESPOKE CARE



Personal, Nursing and Domestic care.
Tailored to your needs.

Call for a free consultation

Tel: 01746 718816

Mobile: 07943834132

www.cmbcare.co.uk

www.facebook.com/cmbcare

email: cmbespokecare@btconnect.com



DRY CLEANING & LAUNDRY SERVICE
20 HIGH STREET, CLEOBURY MORTIMER
01299 270571

HOUSEHOLD & COMMERCIAL WORK WELCOME
FULLY ATTENDED, OPEN 7 DAYS

Self Service ~ Full Service Wash/ Dry/ Fold/ Ironing ~ Large Machine for Big Items
Service Washing for Duvets/ Blankets/ Sleeping Bags ~ Team Sports Kit Laundry Service
Equestrian Rug Cleaning ~ Laundry Service for Pet Items
Professional Shirt Service ~ Nikwax Wash & Proof for Outdoor Clothing

.... the place to air your dirty laundry!

TDC CARPENTRY SERVICES

Fully insured qualified professional
Excellent workmanship and quality customer care
From hanging doors, fitting kitchens to bespoke projects

Tim Clare - 07890 519980



ANNA'S
Barking Barbers
MOBILE DOG GROOMING

A professional mobile dog grooming service,
keeping it easy for you and stress free for your dog.
Every groom is tailored to the dogs individual needs.

07508241628

 @annasbarkingbarbers

Fully Insured | DBS Checked

City & Guilds
Qualified



THE MEN'S SHED MARCHES ON...

Cleobury's Men's Shed keeps on making steady progress as the team move towards an official opening this year. The latest stage has been the ground works for the water and sewage connection for the sink.

Chairman Pete Blackburn also reports that the Robinson family, landlords of the site on Tenbury Road, had the area at the back of the shed levelled and crushed rock spread in readiness for the storage container to be installed. You may remember that in the March Clarion we reported the awarding of a grant of £1,800 by the National Lottery to purchase the container.

HOBSON'S CHARITY AIM ON TARGET



Charlie Farman, Marketing Assistant at Hobson's, with a bottle of the special brew.

Hobson's Brewery have brewed a special Pass The Smile ale, to a recipe created by apprentice brewer Charlie Edwards to honour Ben Crowther, who passed away in 2019, taken by a rare form of cancer. March 27th

this year would have been Ben's ninth birthday.

His family wanted to raise £100,000 for the Childhood Cancer and Leukaemia Group by his birthday. Hobson's agreed that all profits made from Pass the Smile would go to the fund and on March 16th this year the target was reached! The stock they'd brewed sold out in less than 24 hours, so strong was the response to the appeal.

"It's been a real privilege to work on Pass the Smile for the fund," said Hobson's Nick Davis. "We're thrilled that the fund has reached £100,000 in time for Ben's birthday."

Ben's father Scott added; "What better way to remember Ben than raising a glass to him in the current climate? We hope to see plenty of full glasses on social media on the 27th."

Even though the beer is sold out, you can still show your support by searching for 'Pass the Smile for Ben CCLG' online and making a donation direct to the fund. Make sure you share your photos and tag PassTheSmileOrg.org and Hobson's Brewery on social media.

CATHERTON COMMON

The signs of spring are in the air. Buds can be seen starting to burst and many trees already have fresh young, light green leaves. The air is noticeably warmer and always smells somehow fresher to me.

Curlew have been searching the common for quiet areas for several weeks now and can often be heard, we can expect to see skylark and other ground

nesting birds returning to the area from winter haunts.

With the restrictions we have all been suffering during the Covid crisis the pressure on our green spaces has been more intense than ever. With people trying to find somewhere local to get a little exercise and reduce the stress and tension that everyone is under in a beautiful bit of countryside, places are busier than usual. That is why it is even more important than ever that at this crucial time for nature, the start of the breeding season, that we try and reduce disturbance.

To help protect our curlews we need dog walkers to observe the legal restrictions on open access land and keep dogs on a lead. The Skylarks and Stonechats are very busy too and vocal at this early stage, these are also ground nesting birds easily disturbed if dogs are quartering the ground off the lead.

In order to protect our wildlife and avoid any disturbance please act responsibly: -

You **must not** let dogs off the lead roaming across the common between 1st March and 31st July.

When visiting the common keep to rights of way and well-worn paths as much as possible when you access the common.

Do not take vehicles onto the common where you do not have a right of access. If you do have a right of access please reduce to a minimum, driving vehicles off-road.

Clive Dean

*Shropshire Wildlife Trust Reserves
Officer South.*

Professional. Affordable. Local.



Electrical Installations

No matter the size, we can gladly undertake all Domestic, Commercial and Industrial installations you require.

A family run business, with over 25 years industry experience.

From period properties to agricultural solutions, we provide a professional service every time. We also do call outs and emergency work.

Renewable Energy

Protect yourself from rising energy bills by considering renewable energy.

Solar PV is the most accessible way you can save energy by producing electricity from the sun. Earn a tax free income from the electricity your system produces.

Speak to us about how renewable energy can benefit you or your business.

Whatever your query, give us a call.

T: 07971 096267 / 08450 564173

W: www.awe-services.co.uk

Two Staks, Eagle Lane, Cleobury Mortimer, Worcs. DY14 8RA



THE READING GROUP

We have been reading a classic, *Nineteen-Eighty-Four* by George Orwell. A very bleak read with little to cheer us up, not every one felt up to reading it. I think we are all missing the discussions experienced during our normal monthly meetings. A rather miserable story but thought provoking and has many subjects worth talking about. How the world has changed since the book was written (published 1949). The value of freedom of movement, thought and speech. For many people it was a second read, the first being back in our teens, a while back for me. It didn't always stand the test of time, the text not altered but our viewpoint has.

One member found the whole thing completely implausible, having remembered it differently, although the idea of re-writing history struck a chord with the current debate about statues and links to slavery. A book worth reading. If you have done so, feel free to give an opinion. We all look forward to getting back together again in the coming months for friendly

arguments regarding the merits of a varying assortment of books.

Deana Kimber 271754

ROAD CLOSURE

There will be road works on the route from The Miners Junction to Oakfield at Stottesdon from May 24th to 26th May, Shropshire Council's Street Works Team advise.

This is the road through Baginswood that takes you past Heath Farm Meats and it has been in a dreadful state for months. But the notice we have seen refers to Severn Trent Water making a new connection; could that be for the new house built on the approach to Heath Farm? Some work on the road there is long overdue, but this is not a promise of it happening.

Diversions will be signposted.

THE KITES ARE COMING!

Great provisional news from Kite Festival organisers Helene and Paul of skybums.com. They have the sports field at Lacon Childe School booked for July 17th and 18th and are looking forward to another colourful but very quiet weekend with flying visitors

from Scotland, Wales and all over England. This is all subject to the government allowing such events to happen, but social distancing of kites should not be a problem and the friendly families that attend can find plenty of space to move around safely.

As Helene and Paul put it: "Fingers crossed that we can get out and fly again, all being well!" We do hope they can - it's a gentle, colourful event.

THE LACON CHILDE LOTTERY

On Page 37 you'll find a full page advert for the Lacon Childe Lottery. It's been going for years, with a monthly cash prize to be won, but this year it's joined a national scheme that offers a monthly lucky draw prize of £25,000. That plus the regular local draw makes it even more tempting to have a wee flutter. And of course the local element is a fund raiser for the school, which does have a good name that adds to the attraction of the town. People have been known to move here so that their children could go to Lacon Childe.

Full details about joining on Page 37. Good luck!



Claire Bradley
Floral Designs

Florist for all occasions, specialising in wedding and funeral flowers

Winner of the Matrimony Award 2020 Best Wedding Florist
Nominated for 2021 Matrimony Awards

Christmas workshops available

Email: clairebradley1@icloud.com
01299 270415 or 07980 580770




Natalie Taylor Dip CFHP MPS Pract.
Specialist Foot Health Practitioner

Specialising in:-

- In-growing toenails
- Fungal infections
- Nail trimming
- Verrucae
- Calluses
- Corns

All from the comfort of your own home.
If you would like to make an appointment,
please call on **07779 113982** or **01584 890112**

People when thinking of having Home Care often ask who are your staff? What sort of company are they?

TLC are a family run care provider supporting people with Disabilities, Dementia, Aging Population and Acquired Brain Injury to remain living at home for as long as it is safe to do so. Clients when considering home care will often find it difficult to accept and wonder about who are the staff and what qualifications they have? I cannot speak for other companies, however in our company it is made up from many sectors of our society and when these are put together, we have an Outstanding Team. 

One of those sectors are the future NHS professional, we have Daisy who is in her last year of her training to be a midwife, Lucy who is working towards the end of her training to be a Physiotherapist. Christina and Aila about to start their journey into nursing. We have further staff who have just been accepted into the NHS. These lovely kind young adults not only study many hours both in university, on hospital wards, they also give to us and have helped us support our clients for many years! Most joined us while still at college.

TLC have ex-nurses that come to us after raising their family and some, in recent times have re-joined their colleagues in the NHS.

We have staff who have raised their kids and now want a career, TLC will train or retrain people to help people reach their full potential and become one of our Outstanding Team.

We encourage kind caring and honest people of all ages and backgrounds who want to make a difference to people's lives to join our team. TLC invest heavily in people with ongoing support and training to help our new colleagues achieve their goals and reach their full potential. Once initial training is complete and they have been assessed as competent, TLC Induction Manager and our Training Manager will support staff through to achieve their Level 2/3 in H&S Care

Our Training

TLC's Training Team offers full free training on site and support staff through their Care Certificate. We have strong connection with an outside Training Provision who help our staff to achieve their Level 2/3 in H&S Care. Currently we have 32 members of staff that have already achieved Level 2/3 in Health and Social Care. We have qualifications at level 4 and five of our Senior Managers have Level 5. All staff that are new to care are required to achieve Level 2 within the first two years of their employment.

Contact us

For further enquiries please regarding Care or employment please ring TLC Care at Home 01299 272897 for an informal chat. Visit www.tlccareathome.com or wecare@tlc-careathome.co.uk

*Unlock your Potential.
Success starts here!*

COVID-19 Update

All our staff are provided with full PPE's including Gloves, Full Aprons, Sleeves, Visors, Gloves Surgical Masks.

Video training on Donning and Doffing PPE's sent out regularly.

Staff sign health declarations daily, Staff have weekly Covid-19 test. Most of our staff have now been vaccinated against Covid-19. TLC work closely with government regulation and update our risks assessment accordingly.

PEACOCKS PANTRY

An interesting name for a very interesting food shop, newly opened in what used to be John Cope's butcher's shop, next door to Cleobury Opticians. It's run by Phil and Rosie, who were settling in nicely as hosts at the Talbot Hotel when Covid-19 arrived and rather spoiled their plans.

They got through the first phase of the lockdown by doing takeaways and cooking free food to help those in serious need. Good people who get along with their neighbours. But they needed more to do and a chance to earn a living, so took on the shop and changed the interior to suit their style.

They carry a range of meats and can bring in less usual stuff to order. There's an array of cakes, pastries and quiches, cooked fresh every day, plus some very fine looking pies. These people are from the pub trade; you want it, they'll do it.



Phil and Rosie, the smiling faces behind Peacocks Pantry.

They're open from 9.00 to 5.00 except on Sunday, when it's 11.30 to 3.30 to catch the lunch trade. If you want your order delivered, that's no problem and they have a Golden Wheels service that brings OAPs a lunch every day except Sunday for just £5.95. You can see why their weekends are busy.

REMEMBERING

At 12.00 noon on March 23rd the country was asked to stand silent to remember and honour those lost to Covid-19 and all the people who had given so much in the drive to save lives. We

should not forget that many who worked to help the sick were themselves lost to that same virus.

It was a simple ceremony, led by Rector Ashley Buck and curate the Reverend Joe Simons. At 12.00 the small crowd in the Memorial Garden stood in silence as the bell tolled at length before the Rector offered a prayer and thanked everyone who had supported a humble ceremony that reminded us how precious this life is.



Rector Ashley Pugh, with Rev Joe Simons left and Parish Church treasurer Carol Turner suitably masked.

*Beauty Therapist

*Nail Technician

* Contact Toni on;
-Facebook/Instagram
-Toni.w.beauty@gmail.com
-07814188955

* 4 Load Street, Bewdley
DY12 2AF / Mobile Service Available



 TWBeauty

 t_w_beauty

Offering a range of;

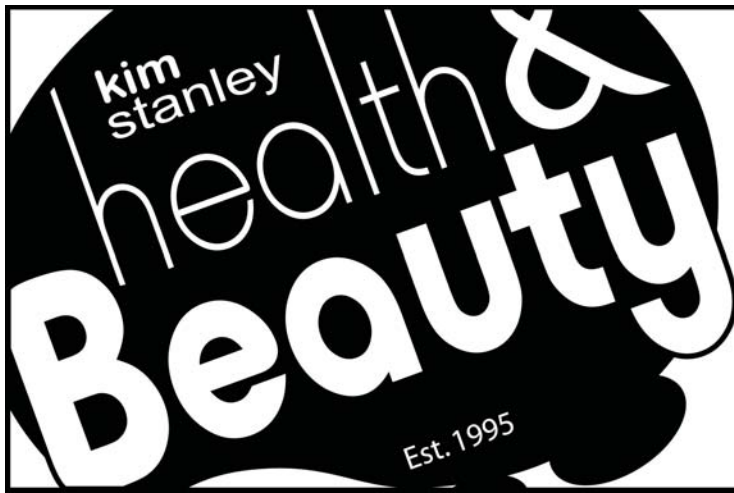
*Acrylic Nails

*Gel Nails

*Waxing

*Eyelash and Eyebrow Treatments

*Massage



Kim Stanley
30, High Street
Cleobury Mortimer
Shropshire
DY14 8DQ



Tel. 01299 271800

www.kimstanley.co.uk



John Brazier & Co

Accountants & Business Advisors

Accounts – Company, Partnership and Sole Trader
Tax Returns – Corporation Tax and Personal
VAT - Returns and advice
Payroll Service including RTI

For a personal and
professional service

Contact John Brazier or Sarah Morgan to discuss your requirements on 01299 271473 or email at info@johnbrazierco.co.uk. Alternatively, you can arrange a meeting at 53, High Street, Cleobury Mortimer, Worcestershire DY14 8DQ

01299 271 473

Maths & English Tutor

for 4 – 9 year olds

- Lessons fun & practical
- Lessons tailored to your child's needs
- Thorough assessment before lessons start

Please ring Sarah
patient, encouraging & positive
0782 635 0334 or 01299 213 105

DBS checked
20 years experience working with children



A.B. Plastering
Plus Traditional Lime Plastering

Adrian Booton
PLASTERER

4 Severne Green, Bayton
Nr Kidderminster, DY14 9LL

Tel: **01299 832 838**
Mobile: **07974 582 524**

A. Farr Painting & Decorating

Give your home a beautiful new look....

Contact:
andyfarr12345@gmail.com 07815 855340

On Line Guitar Lessons

Via ZOOM with an experienced local tutor
Teaching for 26 years privately and in schools

Exams available. DBS certificate

All ages, styles and abilities welcome

Contact Mark for more information @

MARK.CHECKLEY@sky.com

01746 718636 - 07708 386433

Cleobury Mortimer Food Bank

It was in the summer of 2019 that Debbie Brown, chair of the Town Council, was talking to the Shropshire Food Poverty Alliance about them having a stall at the town's festival. To her surprise, they told her that people from Cleobury were seen at food banks in Tenbury Wells, Ludlow and Bridgnorth. No easy journey if you don't have a car, just public transport.

The need for action was obvious and Debbie suggested to our Council that a Cleobury Food Bank be started; they agreed. Debbie met with Clerk Matt Sheehan and Ashley Buck and Angela Flowers of the Parish and Catholic churches. As there were befrienders working for the churches, they knew people in need. A visit to Ludlow and Bridgnorth banks established what was needed and an early agreement was ours would offer non perishable goods - less complication that way.

The Market Hall trustees were supportive and made room available on the first floor, soon to be moved downstairs and more space. Early finance came from the Council, to buy storage cabinets, and they agreed to let Matt Sheehan work on the project every week. In October 2019 the Food Bank welcomed its first visitors.

Debbie recalls the first visit was by a family whose father had lost his job and until their first Universal Credit payment came through in six weeks they had £40 a week to live on. They got advice on other sources of help, like the Marches Energy fuel vouchers that help keep the home warm; simple advice like that was vital.



Debbie Brown - the driving force behind the Food Bank.

Debbie and Matt Sheehan are the co-ordinators of the operation, with a host of volunteers in support. They make up parcels of food and household goods, collect donations and sometimes deliver. Debbie mentioned one elderly client who came to collect food but couldn't carry it home; it was delivered.

The amount of goodwill and donations the Bank generates is a reflection of this community and won't surprise anyone who knows the place. Debbie: "We have so many, like the Doddington Heights Caravan Park, the Hopton Wafers group, the churches, the Market Hall, Select and Save are really kind, both of the schools, the library and of course the Co-op. And did you know that Lacon Childe cook meals for the older people with the school meals and deliver them?"

From the beginning the policy has been that this is an open Bank, with no need to have a referral from other bodies. "We do get some, but they're just

welcome like everyone else who needs help," says Debbie. "If you're struggling to put food on the table, we're here to help."

From that start late in 2019 the growth has been remarkable. In 2020 they prepared 530 food parcels; 281 for adults and 249 for children. And visitors find friendly faces and people happy to just sit and listen, "Face to face" as Debbie calls it. All in a full Covid-19 standard of precautions and if a visitor needs more help than they can offer, there's a strong link to Katja at Cleobury CoCo. There's also monthly networking with other Shropshire Food Banks, where ideas are shared.

Debbie holds down a very demanding job with the NHS, specialising in children's health and welfare but still finds time for both the Town Council work and this service to people who are struggling. Doesn't she get angry? we asked. "Not angry, just frustrated," she admitted.

"There are lots of working people who use us, because their level of pay is so low. For most people their priority is to see that their children are fed."

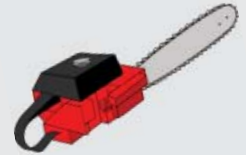
You can't argue with that aim, but did you know that there is a problem out there with Old Age Food Poverty? It was news to me, but it exists and with the hardship that the pandemic has brought and will leave when it is under some sort of control, the need for people like those involved with the Food Bank will not end.

Thank heaven for their simple goodness.

Jim Reynolds



**N.R. Evans
Garden Maintenance**



All aspects of garden maintenance undertaken
Lawn mowing, strimming, hedge cutting, chain sawing,
garden clearances, patio jet washing.

Call for a chat on 07535 902847

Email: nrevansgardenmaintenance@gmail.com Facebook: N.R.Evans Garden Maintenance

MAWLEY OAK GARAGE & TRAVEL

Mawley Oak Garage is an established and family run Garage since 1980 We focus on providing a friendly and reliable service at a competitive price.

Mawley Oak Garage

FREE Diagnostic check with every full service
MOT & Oil service Starting from £99**

MOT, Repairs & Servicing, Exhausts,
Tyres, Cam Belts, Laser Wheel Alignment,
Clutches, Shock Absorbers, Diagnostics,
welding, electrical faults



* Local collection & delivery service.
* Subject to availability and Conditions apply
** Prices vary depending on make and model of car,
call for a free no obligation quote

Travel

16, 24, 28, 32, 49, 51 & 53 seat vehicle's

- * Airport Transfers * Weddings * Day trips
- * Theatres * Sporting Events * School trips
- * Dog & Horse Racing * Nights out

Call or email now For your free no
obligation Quotation

Call : on 01299 270207
[Email now enquiries@mawleyoaktravel.co.uk](mailto:enquiries@mawleyoaktravel.co.uk)

Telephone our today and either Ask for the workshop or travel
01299 270207

MIKE AND SHELLEY ROBERTS

Haulage Contractors

Supplier of Aggregate and Asphalt products

12 Lacon Close, Cleobury Mortimer DY14 8EF

07860 669350

07966 045012

The Clarion Jobs Page

We're Hiring Healthcare Assistants!

- Does your current job fill you with pride and the knowledge that you made a real difference to someone else's life today?
- Are you looking for job security and to work for a growing, reputable company who invests in their staff by offering plenty of training and development opportunities?



CM BESPOKE CARE LTD.

CM Bespoke Care is the leading home health care provider working across Shropshire and Worcestershire. We've adopted a nurse-lead, client-based approach to home care and our carers are some of the very best in the business.

Due to our continued growth we have several new Healthcare Assistant roles available (full and part-time). We're looking for;

- Caring and compassionate people to join our fabulous team
- People who have their own transport and a current driving licence
- People aged over 18 years old due to regulatory standards

To find out more call **01746 718 816** and speak to Ian or Emma or email Emma at emma.yeomans@nhs.net. We're ready if you are!

The Clarion Jobs Page

**Single entry job adverts are
printed free of charge**

**As a service to our community, the Clarion
prints single entry job adverts free of charge.
With a monthly print run of 1,000 copies
and 350 website visits this is an ideal
place to attract the best candidates in
the workplace.**

Call the editor ^{Page: 1} on 01299 270642.

Firewood

Seasoned logs, barn dried & ready to burn.

Free local delivery -01584 890993 or 07970878224

Various size loads available



Paul Harding Tree Services



Flowers By Fiona *est 1991*

Fresh Flowers made to order

Special Occasions

Weddings, Anniversaries, Birthdays

Sympathy Tributes

19a High Street,
Cleobury Mortimer

Tel: 01299 272 995

RWS

R. Weavers
Services

Stove Installations, Service and Repair

- All solid fuel wood burners and boilers supplied and installed
- Chimneys relined and twin wall systems built
- Chimney Pots, Cowls, Carbon Monoxide alarms and Air Bricks fitted
- All Stoves and Fires serviced including chimney sweep
- Hetas Landlord Safety Certificates

Tel: 01299 272712 Mbl: 07807 343006

email: info@rweaversservices.co.uk



PODIATRY/CHIROPODY

Debby Luxton. HCPC Registered

Treating and Caring for Feet
General and Specialised
(Verruca and Fungal Nail)

www.ludlowpodiatrist.co.uk


Hollyoak
Health

OSTEOPATHY

Ian Luxton. GOSC Registered

Treating Pain and Injury
Acute and Chronic
Head to Toe

www.ludlowosteopath.co.uk

We are both highly qualified, very experienced and absolutely dedicated to providing our patients with the best quality care in our respective disciplines.

We have many testimonials from patients, some are on our websites and a couple to the right.

Middleton | Ludlow | SY8 3EF

T: 01584 823331

"I'm now free of discomfort due to the excellent and wholly appropriate treatment you have given me."

"We have greatly appreciated your attention and trusted your advice."



An update for the Cleobury Clarion

When the Mawley Hall Estate changed hands in 2018, the new owners made clear that they were committed not only to restoring the fabric of Mawley Hall but to rebuilding it as a working estate.

In order to achieve this goal, the various components of the Estate need to be managed commercially and effectively. This is now achievable, thanks to a number of significant recent property acquisitions which, when fully integrated with Mawley, will enable the dream of a revitalised estate to become a reality.

The acquisitions include the purchase of nearby Kinlet Estate, Kinlet Hall itself, Birch Farm and the Cleobury Mortimer Golf Club bringing the acreage and facilities under management much closer to the scale needed for economic viability. The additional arable land, pasture and woodland will generate both income and employment, as will the commercial operations of Cleobury Mortimer Golf Club and Kinlet Hall.

Mawley Hall LLP, the entity which holds and manages the Estate, is arranging its activities by means of a series of separate divisions operating under the overall umbrella brand, **Green Knight Estates**.

The farming and forestry elements of the Mawley and Kinlet Estates and Birch Farm are being brought together under a familiar name: one steeped in Shropshire history. As is well known, as long ago as the Domesday Book and surviving for centuries thereafter, Shropshire was divided into fifteen administrative areas called Hundreds, each containing an estimated 100 hides - the amount of land needed in order to support a family. The agricultural and forestry elements of the expanded Mawley Estate are to be called **Shropshire Hundred: Farming & Forestry**.

The names of **Kinlet Hall**, **Cleobury Mortimer Golf Club** and **Mawley Hall** will of course remain unchanged and these represent the remaining three operating divisions. All of this is being set out in a new website, the initial components of which can be viewed at www.greenknightestates.co.uk although it will be many months before the enlarged Estate will be able to operate fully, and elements of the website be completed.



Bumperscuff Rescue

- Body Shop excellence
- Home convenience
- Cost effective car body repairs!
- Bumper scuffs
- Paint scratches
- Kerbed alloy wheels
- Small dents

Free no obligation quotes, all work fully guaranteed Call **Andy Taylor** now on **07834 322216** or visit **www.bumperscuffrescue.co.uk**

CLEOBURY MORTIMER CARPETS

Supplying and Fitting of:-

- Carpets
 - Natural floorings (Coir, Sisal & Seagrass)
 - Vinyls
- Carpets supplied by: Victoria Carpets, Fibre Flooring & Alternative Flooring at Unbeatable Prices

Contact Details:-

Address: 26 High Street
Cleobury Mortimer •DY14 8BY

Telephone: H: 01299 270095
M: 07739 186163

Email: garethleach@aol.com
or check out our new website
www.cleoburymortimercarpets.co.uk

INFINITE ELECTRICAL SOLUTIONS

For all your electrical needs:

House rewires

Fuse board upgrades

Electric showers

Need an extra socket or light installed?

No job too small



For a FREE quote
Call Lloyd 01584 811184



TIME TO CLEAN YOUR OVEN? LET US DO THE JOB YOU HATE

AS SEEN
ON TV

- Ovens
- Grills
- Extractors
- Filters
- BBQs
- Microwaves
- Hobs
- Ranges
- AGAs

Call or go online today for your free estimate

OVENCLEAN
The original oven cleaning specialists

07913 123543
ovenclean.com



A CANCER BREAKTHROUGH

Pancreatic Cancer, one of the deadliest forms of that awful disease, had a special appeal to its supporters recently. They had a group of very generous sponsors prepared to double whatever the appeal could raise in an urgent fund raising drive. The result was £169,000 raised and that was doubled to add £338,000 to the research and development fund.

And to confirm what can be done with fund raising through public support, it was announced that the research team at Barts Hospital in London had discovered a new protein that can target and destroy the cancer without damage to surrounding healthy tissue.

One of the team has confirmed that this is a new treatment option that will be available in the future. That means the world will be a slightly safer place.

AN APOLOGY

In our obituary for Sheila Whitefoot in the March Clarion, we stated that she had died following a heart attack in hospital. We were wrong.

Her family tell us that she passed away peacefully at home, where she surely would have chosen to be. Our apologies to Kevin and Angela.

HAVE YOU TRIED?

Heath Farm Meats have cut back on the range of foods they offer along with their excellent meat products, but they do have a few gems that are worth a look.

On the counter they normally have a selection of home made jams, sold to raise funds for the County Air Ambulance. Every time I see Raspberry Jam on offer, I simply can't resist the chance to savour that flavour again. And a recent edition to the choice is an Elderflower Flavoured Marmalade - I've never seen that before. It was too tempting to miss and did not disappoint; less sharp than the orange version, but a very pleasant mellow morning experience. Recommended. *JR*

THE REMARKABLE MRS JANET MOSS

Janet Moss is now the oldest resident in Saint Mary's Place, that gentle collection of bungalows just off Love Lane. A lively, well informed lady who does not look or act her age; she will be 98 in May.

By way of celebrating this event, Mrs Moss decided to do a little fund raising, aiming to support a local cause rather than one of the national funds where the modest results from a small community like this would not make a great impact. So she elected to give her time to supporting the Cleobury Old Comrades, the social branch of the Cleobury Mortimer Royal British Legion branch.

Her plan is to walk half a mile each day, weather permitting, by following a circuit around Saint Mary's Place and making her own donation on the simple basis of A Pound A Round. Her target was 100 Rounds, with Pounds to match, and when we spoke

to her on March 24th she had already completed 75 Rounds.

She is very modest about her efforts, explaining: "It started as a bit of fun to commemorate the centenary of the Royal British Legion. I walk regularly when the weather is good and can get along quite well with my frame." With more than a month to go, it looks as if she will easily hit her target.

Mark Baldwin has been advising and helping Janet and can accept donations to add to the fund in his capacity as treasurer of the Old Comrades fund. There has been mention of a Just Giving page for online donations, but details of that were not available when we went to press. If we do learn what the contact details are, they will be in the May issue, when amongst the notable celebrations will be one very remarkable lady's birthday.

MORE FROM THE MEN'S SHED

As we go to press, news comes in that the Cleobury Men's Shed has had 20 tonnes of hardcore delivered by Midland Quarry Products for a foundation for their storage container.

But that's not all! Later on the same day came news that NFU Mutual in Ludlow had been asked to nominate a good cause for a donation of £6,451.62 from their Agency Giving Fund and the branch have chosen the Men's Shed project for the "wonderful work your charity is undertaking." Excellent news, a reward for hard work on behalf of the community.



Domestic oil-fired boiler breakdown & maintenance services.

27 years' field-service experience with leading UK boiler manufacturer Worcester Bosch.

Donovan Taylor

Tel: 01299 828670 or 07807 837040

donovan.taylor@sky.com

www.greenstar-boiler-repairs.com

Caring about your environment and providing an honest, professional & reliable service you can trust



Soft furnishing and
Interior Design Services

Masquerade
Fabrics Limited

01299 271 680

36 High Street Cleobury Mortimer near Kidderminster
Worcestershire DY14 8DQ

Retailers for Sanderson, Harlequin, Monkwell
Crowson and many more...

Comprehensive design, measuring and fitting service.

FALCO HEATING

The Solid Fuel Specialists

GARY HARDING - HETAS registered

Old Hall Farm

Clows Top, Worcs. DY14 9HE

T: 01299 832030

M: 07896 685 947

FalcoHeating@gmail.com

www.FalcoHeating.com



COUNTRY SKILLS

CPCS/NPTC Approved—fully insured

- Outside Renovation
- Tree Surgery, Hard Landscaping
- Slabbing and Fencing
- Decking, Roofing
- Contract Mowing

Call for a free quotation

R. Price & Sons

Mobile: 07967 140720 Email: roger@country-skills.co.uk

WANTED

Carolyn Balmer, the better half of one pair of the local do-Gooder's in Cleobury Mortimer, is asking for ladies under-wear, bra's pants, toiletries new or opened, and sanitary products etc, and babies nappies etc, some of which will go to local ladies refuges, the Bewdley Baby Bank and some abroad. So ladies if you have anything that fits our requirement and no longer fits your requirement, would you leave them in the Market Hall in Cleobury M. Many thanks, we and they would be so grateful.

Attractive, intelligent, country loving guy, youthful 49, bright personality, playful sense of humour (or soh), enjoys walking, animals, coast, seeks female companion 30s-50s share quality company. Please reply, you may be pleasantly surprised:
akh.active@mail.com



Hobbs Building Services

EST 25Years.

A Total Plastering, Maintenance and Building Service for your home,
business and outbuildings.

Insurance work undertaken

Emergency call out service for general plumbing, roofing, boarding up damaged doors and windows. For a free quote please call;

Ian on; 07967190742

Email: hobbsbuildingservice@yahoo.co.uk Or Call/Text Kelly on; 07790085307

Stepping Out! Who's Walking, When and Where.

BAYTON NEWS

Steve Woodison and I are the footpath wardens for Bayton, working on behalf of Worcestershire Council. Steve mainly looks after Bayton Common and Beach Hay while I do around Bayton Village. Our expected duties are clearance and waymarking. That includes putting in posts, if needed, for the waymarks (not the roadside ones which are done by the council). We have also put chicken wire on some bridges to make them safer to use.

There are currently 47 stiles in Bayton, some difficult to use. The Council expect us to report problem stiles for them to do. They will not repair or replace them, but add them to a long list of those to be replaced by gates, unlikely to be done anytime soon. In the meantime we are left with dodgy stiles.

However, they will supply gates where the landowner will agree to instal them. We have had some success in this. One is to go in at Teddon Farm, three at Norgrovesend and eight at Ladyfields. We hope we can persuade more landowners to do the same and are willing to put them in if needed.

We would like to be able to make minor repairs to stiles. Mainly new steps but also bracing where they are wonky. To do so we need to buy timber but WCC will not provide any money to do so. We are going to ask the

Parish council if they will fund this.

If you have any questions or information about footpaths, please contact me on susanjsharp44@gmail.com

DOG WALKING REVISITED

Last month Rachel Robinson of Mawley Farm wrote about cows aborting due to eating fodder contaminated by dog mess. It is sad to report that Shakenhurst, our other local dairy farm, is suffering the same loss and distress.

Both of these farms have high welfare standards and are considerate and helpful to walkers. They and their animals deserve better from dog walkers.

To re-iterate what Rachel so nicely asked in the last Clarion, please make sure your dog is close enough, preferably on a lead, when in arable fields or pasture so that you can see if it messes, pick it up and take it away to dispose of safely.

ROCK PATHFINDERS ARE BACK IN ACTION

How good to hear from this very popular group. Susan Humphries writes:

The Next Walk will be on Thursday 15th April 2021.

From March 29th walkers are allowed to walk in groups of six. As we now have the road map, as long as everyone keeps to the route, we feel we should be able to recommence the monthly walks from April. However social distancing

will still be in place and therefore if you would like to join the walk please email your request to suehumphries1@hotmail.co.uk

Sue will then divide the walkers into groups of six, each group having their own leader. As we only have a few walk leaders walkers will be invited to join on a first come basis. We are looking forward to seeing everyone and getting back to normal. For further details and any other announcements or changes please visit website www.rockpathfinder.s.uk Everyone Welcome
PLEASE NOTE NEW WEB ADDRESS
email: mdsskev@rockpathfinders.uk

Or ring Alan on 01299 400304

CMFA

Thank you to everyone who has renewed their CMFA 2021 membership and welcome all new members who have joined us in our work of maintaining the network of footpaths in Cleobury Country. We hope you enjoy walking these paths with Spring now with us. We have had more feedback on problems encountered, which we greatly welcome, especially with photos! You can contact us via Facebook or on our website www.cmfa.co.uk – we try to give a quick response and deal with any issues appropriately, including adding to our work party programme which is back in action.
Graham Simpson

Mark Pearce

Landscape, Design and Rustic Garden Furniture

- Fencing
- Patios
- Drives
- Decking
- Garden Sheds
- Summer Houses
- Fence Panels
- Log Stores



And Much More

Top Quality Fully Treated Timber Products

Mobile: 07875425028

Tel: 01746718404

Robert Bradley Logs

07794 798616



*Seasoned Firewood, Hardwood,
Softwood or Mixed loads of logs.
Free Local Delivery*



Fresh milk and cream from
Cleobury Mortimer

www.mawleytownfarm.co.uk

01299 270359



SKELLERNS

DOORS & WINDOWS



- UPVC Fascias & Guttering
- UPVC Windows, Doors & Conservatories
- General Home Improvements
- Re-roofing & general building work
- Replacement Glass
- Patio Jet Washing



Free No-Obligation quote. FENSA registered company with years of experience

Call Mike on: 01886 812250 or mobile: 07814 577739

www.skellersndoorsandwindows.co.uk



Professional Family Estate Planners



- Wills or Lasting Powers of Attorney from £95
- Free Will reviews
- Probate support
- Care home fee avoidance
- Free funeral plan with every Will
- Family Protection Trusts

"A lifetime's attention to complex legal issues as a retired Detective Superintendent and now a Private Client Lawyer means **you can definitely trust Mark and his daughter Lauren to write your Will**"

T: 01299 251442
E: info@ambalegalservices.co.uk
W: ambalegalservices.co.uk



- Appointments by telephone, video link or in the comfort of your own home
- Over 45 years' experience in law
- Friendly and professional support for you and your family
- Call us up to see how we can help!



Sallie Shaw Therapy and Wellbeing

For help with sleep issues, anxiety, lack of confidence and managing chronic pain

You can talk to me, book a session or visit my website and try one of the relaxing journeys for free. Become a member and gain access to a range of audio recordings, group sessions and advice. I use hypnotherapy and guided meditation to help you relax and resolve difficult issues.

Tel: 07500 427238
sallie@sallieshawtherapy.co.uk

Just a few things my clients say after an individual session or listening to my audios:

"I haven't slept like this since I don't know when"

"Now I am calm I can get on with my life and enjoy it"

"Wow! I didn't realise I had been carrying those negative feelings with me for nearly 50 years"

"Your voice is so soothing I felt like I was being wrapped in a warm blanket"



Visit www.sallieshawtherapy.co.uk to try one of the relaxing guided journeys for free!



Home Support Services

All staff enhanced DBS checked with over 20yrs experience and training within the local authority/social services mainstream and dementia care sector. Fully insured.

Are you in need of support with the following basic day to day tasks?

Assistance during the day or night

Companionship

Shopping/Household tasks

Completing Forms

Pet Care

Attending social events/ appointments

Contact Liz

Tel: 01299 271623

Mob:07826 929222

liz@livelifeathome.co.uk

Other support services available on request.

www.livelifeathome.co.uk

Contact Tracey

Tel: 01299 211660

Mob:07957 659909

tracey@livelifeathome.co.uk

BILL'S QUALITY METALWORK

5 GREENFIELD ROAD, CRAVEN ARMS SY7 9QU

Manufacturing Made to Measure Gates and Railings,
Balconies and Staircases, Handrails, Carports, Structural Steelwork
and Mobile Welding Service.

Phone Bill on 07973 248 016 Mobile or 01588 673 914

Office for a free quote



Electrical & Security

Tel: 07973 112463 (Anytime)

01299 489223



- Full/ Part Installations
- Existing System Updates
- Alarm & Security Systems
- PAT Testing
- Domestic and Commercial Properties
- Electrical Problems
- Landlords & Electrical Safety Certification
- Upgrades
- Free Callouts and Quotes
- For Existing and New Installations and Security.
- Part P + Full Scope Registration
- Card Payments Accepted



Fast Friendly Service, No Job Too Small



FOR ALL YOUR ACCOUNTANCY REQUIREMENTS

www.fairway-accountants.co.uk

Head Office: 01299 822283
team@fairway-net.co.uk

Simon Hector: 07896 439594
sjh@fairway-net.co.uk



Philip Dunne's Letter from Westminster

With the continued rapid pace of the vaccine rollout in Shropshire, the long Easter weekend to look forward to, and clocks changing at the end of March, April really does feel like we have moved into a new phase of life returning to some sense of normality.

For so many in retail, personal care, community assets, self-contained accommodation, outdoor attractions and of course, much of the hospitality sector, this month represents the end of the long wait to return to trading.

This month we move into Step 2 – no earlier than 12th April – which sees the reopening of non-essential retail; personal care premises such as hairdressers and nail salons; and public buildings, including libraries and community centres. Indoor leisure facilities such as gyms will also reopen (but only for use by people on their own or in household groups), as well as most outdoor attractions.

Step 2 will also see a decision taken on whether to allow two named visitors to care homes. The past 12 months have been so tough for care home residents, so I sincerely hope we are in a position to do this. In addition, the number of people able to attend weddings, receptions and commemorative events such as wakes will rise to 15.

I know the past year has hit the pub and hospitality trade incredibly hard, so I am pleased that Step 2 also sees the reopening of hospitality venues to serve people outside, without the need for a substantial meal – so ending the scotch egg debate - and without a curfew, although customers must order, eat and drink while seated (table service). We are lucky to have so many brilliant pubs and restaurants across South

Shropshire, so I hope residents will support their favourite local, once we are allowed to do so – though it will be important to adhere to the rules to prevent indoor mixing between different households.

Given the vital importance of tourism to the South Shropshire economy, and the thousands of local jobs it supports, it will come as a great relief to local accommodation providers and the many people who own touring caravans that this month self-contained accommodation such as campsites and holiday lets, where indoor facilities are not shared with other households, can also reopen.

The Global Travel Taskforce will also report to the Prime Minister on 12th April with recommendations about how to resume international travel as soon as possible, while managing the risk from imported cases and potential new variants – though this will be no earlier than 17th May, as we move to Step 3.

South Shropshire would, in normal times, be looking forward to hosting larger events throughout the year – including the Ludlow Food Festival, and Burwarton Show, both of whose committees are keen to hold their event if possible. No one wants another year gone without these stellar events, so I am pleased that from Step 2 the government will begin a scientific Events Research Programme, to run throughout the Spring. This will allow a series of larger pilot events, using an enhanced testing approach and other measures to evaluate the impact of larger crowds and reduced social distancing.

I wish readers a very pleasant Easter, and hope that the coming month will bring some relief and optimism as restrictions are loosened.

Philip Dunne

The Miah Brothers Famous Spice Empire

Bringing great taste and value to Cleobury Mortimer for 17 years



17 High Street, Cleobury Mortimer
6-11pm 6 Days a Week
Acclaimed Indian restaurant with wide range to suit all tastes.
Sunday Buffet from 12.00pm-9.00pm.
As much as you can eat for just £9.95 a head.
Free home delivery up to 5miles
Reservations: **01299 270419**



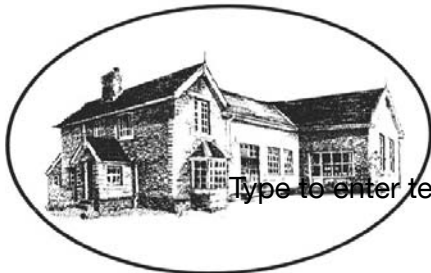
6/7 Church Street, Cleobury Mortimer
'Fine bar, excellent food at prices to suit all pockets'
Top Value dining.
Our Dine In Meal Deal gives you a: starter, main course and naan or rice for just £9.95.
Tuesday to Sunday, 6.00-11.00pm
Reservations: **01299 271485**



57 High Street, Cleobury Mortimer
6-11pm Wednesday- Sunday
Dine at home with the same great quality our restaurant offers.
Monday- Tuesday collect Takeaways from Spice Empire:
Tel: 01299 270419
Free home delivery up to 5miles.
Orders: **01299 271604**

Bayton Church of England Primary School

- Be the best you can be, as a child of God -



Type to enter text

www.baytonceprimary.co.uk
01299 832393
office@baytonpri.worcs.sch.uk

Call or email to book an appointment to visit our school and meet our staff.

"We offer an alternative and unique Primary School experience, in an idyllic rural setting. A small family-orientated school with a caring ethos and traditional values, coupled with excellent results. If you want the very best for your child, come and visit us."

*Ms. Jolanda Simmonds
Head Teacher*

**Spaces currently in Years 4, 5 & 6, and we are also welcoming Parents & Carers of September 2019 intake.
Governor vacancies – please call for information**

Rated "Outstanding" in our latest SIAMs inspection (March 2018).

Friendship – Hope – Perseverance – Compassion – Trust – Forgiveness – Responsibility – Respect – Truthfulness

Our school vision: We aim for everyone to be a part of our community, be life-long learners who are confident, enthusiastic, valued and reach their God given full potential.



STRANGE TIMES

In the strange times of the past year who has not been challenged to find new ways to get and keep fit, healthy and sane. None of us live more than a five minute walk from our homes to lovely countryside, fabulous footpaths and wildlife corridors. It's free, with buckets of fresh air and exercise and Covid safe if socially distanced from other walkers. We have over 100 miles of such footpaths, run by our Cleobury Mortimer Footpath Association. For the past several months, as one would expect, some paths have been made impassable due to mud, excessive rain and much use. After a time, walking just the tarmac paths becomes a bit boring and the challenge has been to find something slightly more varied and different. I was introduced a few months ago to a phone app - Conqueror Virtual Walking and though not an app person, and not easily adaptable to the concept of virtual exercise, I gave it a go. By mid March I have virtually walked 70% of the 128 miles of the Ring of Kerry in South West Ireland. While my body has not left the environs of Cleobury, my mind has been in Kerry and its beautiful countryside and I have lost over a stone and counting.

The Conqueror app offers many trails around the world from Hadrian's Wall -90 miles, Land's End to John o' Groats -1083m, to exotic Mount Fuji -46m, Grand Canyon -280m, Giza

pyramids 46m even the Appalachian Trail-1968m and recently a Safari 256 miles and the Pacific Crest-2485m. You collect daily totals of exercise; walk, run, cycle indoors or outdoors together with other exercise, convert it to walking miles and post the achievement to the app which updates your selected journey. It gives you where you are on the map, an interactive video, history and information of your surroundings as well as stimuli such as post cards of places where you have been.

You could go individually, as a group or connect with fellow virtual walkers and share experience real and virtual. The distances seem daunting, but it is surprising how far you do go locally that adds up to large numbers. A dog walker may walk well over 20 miles a week, which in half a year could add up to 500 miles. Reward yourself, record your actual walking and virtually walk and immerse yourself in an experience in a strange but exciting way.

When I finish the Ring of Kerry by May I intend to start the virtual Camino de Santiago-480 m, that famous and very well used pilgrim's trail from the French Pyrenees through Northern Spain to Santiago de Compostela following the French route taken by St James.

I know of several readers of the Clarion who have actually walked all or part of the

Camino. They know of the exhaustion but exhilaration of the actual walk. To those people I say "Bueno Camino". My ancient limbs and joints as well as Covid restrictions will not allow me to do the actual walk but doing it virtually comes as a second best. Strange times indeed.

Kit Smith

A LITTLE MORE FOOTPATH NEWS

Re the Newbridge to Papermills Riverside Path

Despite being heavily used, this path has recently been under threat yet again from Bramble. We are lucky to have two excellent new footpath guardians for this footpath in Steve and Liz.

In the last couple of weeks a significant amount of work has been put in. The bramble has been uprooted and cut back two or more feet from the path and the immediate threat is dealt with.

This path requires a continual effort to keep from being overrun with bramble. If you are a user of the path, firstly admire the work that has been done, but more importantly, please carry and use secateurs to play a part in keeping it open.

Susan Sharp

WISE WORDS

"Music expresses that which cannot be said and on which it is impossible to be silent."

Victor Hugo

WISE BIT?

"After reading about the negative effects of drinking, I have decided to stop reading."

Anon



The Lamp Restaurant

15a High Street, Cleobury Mortimer, Shropshire, DY14 8DG

01299 272785 or 01299 271313

Fully Licenced and Air Conditioned

Serving Bangladeshi & Indian Cuisine



The Lamp Restaurant winner of Currylife award chef of the Year

Open 7 days a week from 6.00pm until 11.00pm

The Lamp's cuisine, inspired by Sylhet, the second city of Bangladesh, offers a wide variety of choice along with established favourite dishes and a selection of Chef's Specials.

The wide variety of starters and accompaniments chosen by our chef to complement your main course.

Takeaway service offers free delivery up to 3 miles for orders over £15.00.

Find us on Facebook: Lamp Inn Cleobury Mortimer



Michael Coombes Roofing & Building Maintenance.

Complete Re-roofing, Roof repairs, Pointing & Chimney repairs.

Slabbing & Brick work

Wall & Floor Tiling

Painting & Decorating

Over 20 Years experience in the Cleobury area.

Call Michael on 07854 047413

APSupplies

- ◆ Specialists in equestrian and field maintenance
- ◆ Haylage, hay and straw supplied
- ◆ From chain harrowing to mowing and baling
- ◆ Fencing to ménage maintenance
- ◆ Woodland management and coppicing
- ◆ Concrete pads and sheds all at competitive rates



APSupplies.....Call today for a chat !

Ant Harman: 07779239393



CLEE HILL COMMUNITY WILDLIFE GROUP



The Bird Group has been monitoring breeding Lapwing and Curlew on Clee Hill and the surrounding area since 2012, as their numbers are rapidly declining. There are now about 8 pairs of Curlew. Lapwing numbers fluctuate.



Lapwing

WE NEED MORE HELPERS, PLEASE.

It's easy, and only takes three half- days. Simple survey instructions, and a map to record what you see, are provided.

If you see either species,
please tell us
where and when

Curlew



If you want to help, or would like more information, or want to report where you saw or heard one of these species, please contact

Chris Bargman

01299 270514

email: chcwgs@shropscwgs.org.uk

You can find out more about what we do, and see the results of our work in previous years, on the Clee Hill pages of the Community Wildlife Groups website www.ShropsCWGs.org.uk

Andrew Jordan (Jordy)
JRD.GROUNDWORK@GMAIL.COM

Moors View
Moors Lane, Oretton,
Kidderminster, Worcestershire
DY14 8RH



AVAILABLE SERVICES

- Foundation & footings
- Concreting
- Driveways
- Ditching
- Drainage
- Landscaping
- General Building
- Fencing
- Hedgecutting
- Digger Hire
- All Jobs Undertaken

*Specialising in Wills, Lasting Powers
of Attorney and Probate*



Amanda Weston FCILEX, MIPW



- Approachable and friendly
- Free Will review clinics
 - Competitive rates
- Qualified lawyer as well as a member of The Institute of Professional Will Writers
 - Home visits available

Email: mandy@westonswillsandprobate.co.uk
Mob: 07931 411733
www.westonswillsandprobate.co.uk
Old Snuff Mill Warehouse, Park Lane, Bewdley, DY12 2EL

 @WestonsWillsandProbate
 @WestonsWills

- Over 30 years experience in the legal profession
- Fully DBS checked
- No matter how big or small your query, please call!



07971 361901 or 01299 832484

**Complete Bathroom Installations
Bathroom Refurbishment or Repairs
Wet Rooms
Professional Wall and Floor Tiling**



For a quality and guaranteed service, call Stuart for a free quote
Highly Recommended / References available - see my reviews on www.freeindex.co.uk

FOR THE BATHROOM YOU DESERVE!

APRIL BIN COLLECTIONS

Thu 1st BLACK WHEELIE BINS AND RECYCLE BOXES EMPTIED

Thu 8th GREEN GARDEN WASTE WHEELIE BINS EMPTIED

Thu 15th BLACK WHEELIE BINS AND RECYCLE BOXES EMPTIED

Thu 22nd GREEN GARDEN WASTE WHEELIE BINS EMPTIED

Thu 29th BLACK WHEELIE BINS AND RECYCLE BOXES EMPTIED

AND LOOKING FORWARD TO MAY.....

Thu 6th GREEN GARDEN WASTE WHEELIE BINS EMPTIED

We hope to offer something like the traditional Social Calendar next month, as the lockdown possibly eases and regular events can start again. Any organiser wanting a mention on this page (two pages when we really get back to normal) is welcome to contact the editor on 01299 270642 or email uncle.jim@icloud.com with details.

CLEOBURY MORTIMER PARISH HALL

EXTENSIVE WORK ON THE HALL HAS NOW BEEN COMPLETED AND WE LOOK FORWARD TO OPENING OUR DOORS AND WELCOMING YOU, SUBJECT TO GOVERNMENT ORDERS.

**To book the Hall, please contact Jan Short
on 01299 271070**

or janetshort78@btinternet.com

THE TOWN'S BEST VALUE VENUE

Cleobury Opticians

NHS & private eye tests ♦ FREE children's glasses

FREE NHS glasses ♦ Home visits



Opening Times-	
Tuesday	9am-1pm 2pm-5pm
Wednesday	9am-1pm 2pm-5pm
Thursday	9am-1pm 2pm-5pm
Friday	10am-2pm
Saturday	9am-1pm

www.cleoburopticians.co.uk

16 Church Street, Cleobury Mortimer, Kidderminster
DY14 8BX

Tel: 01299 270012

Email: cleoburopticians@outlook.com



All Aspects of carpentry work undertaken

Level 3 City & Guilds in Carpentry & Joinery, 20 years of experience

Tel: 07854 032750

Email: duncpearce1@gmail.com

Stewart Mumford Architectural Services Bespoke Architecture

Great value personal service backed up with extensive local knowledge, established links with other construction professionals to ensure comprehensive packages specifically tailored to individual needs.

Initial consultation free of charge.

Specialist in Works to Listed Buildings, Affordable Houses, Open Market Houses, House Extension and Alteration, Barn Conversion and Commercial Projects.



T: 01299 271068

M: 07977 921039

E: office@stewartmumford.co.uk

Newsletter

Cleobury & Highley Safer Neighbourhood Team March 2021

Your Safer Neighbourhood Team for Cleobury & Highley

Cleobury Mortimer, Eardington, Chelmarsh, Highley, Billingsley, Glazeley, Deuxhill, Sidbury, Stotteston, Aston Botterell, Burwarton, Cleobury North, Neenton, Middleton Scriven, Chetton, Ditton Priors, Neen Savage, Farlow, Kinlet, Burford, Boraston

PC 2705 Steve
MELLOR



PCSO 40270 Stephen
DUNN-BROWN



PCSO 6413 Shelley
HYDE



We are a dedicated team of Police and Police Community Support Officers who work with the local community and partner agencies to improve your neighbourhood. Your SNT are based at Bridgnorth Police Station.



The Safer Neighbourhood Team answered calls from members of the public who were reporting Antisocial driving within the Cleobury Mortimer area. The SNT worked with Road Policing to tackle this. Many drivers were stopped and dealt with. Since the operation this problem is now much reduced within the area.



My name is Sergeant Kate Øen and I am due to join the Bridgnorth SNT on 15/03/2021. I am very much looking forward to joining the team and meeting the local community.

I have been a police officer for nearly 11 years and have worked across the Shropshire area. My career with West Mercia Police has spanned a variety of roles which include; Response Policing, Child Sexual Exploitation, Domestic Abuse and also Professional Standards. I hope that I can use my knowledge and experience to deliver a high quality service to the public. I look forward to working with you all.

Two Mountain bikes were stolen over night from farm buildings near to Billingsley. The Safer Neighbourhood team recovered these bikes undamaged from another farm approx. 1/2 miles away. Smartwater has been issued to the owners to mark the bikes and advice has been given. PLEASE LOCK YOUR BELONGINGS AWAY.

We continue to receive reports of Covid-19 breaches in the area, along with discovering others whilst on patrol. The majority of residents are doing all they can to follow the rules and we are very thankful to all that continue to do so.

ch.snt@westmercia.pnn.police.uk

Twitter : @SouthShropCops Facebook : Shropshire Cops

Phone : 101 ext 7704211 (non-incident line)



EVERYTHING INTERIOR UPHOLSTERY

REUPHOLSTERY SERVICES:

- AUTOMOTIVE
- CARAVANS
- CAMPER VANS
- TRADITIONAL & MODERN
- COMMERCIAL & BESPOKE
- DOMESTIC
- CARPET & UPHOLSTERY CLEANING
(in partnership with WE GLEAM)

OVER 30 YEARS EXPERIENCE



CONTACT US TODAY

Unit 19 Old Station Business Park, Cleobury Mortimer, DY14 8SY
07961 712683 / 07961 792103
www.everythinginterior.co.uk
email: everythinginterior@outlook.com

Marian Rees remembers dogs she's known

When we meet fellow dog walkers, it is often a way to be friendly by enquiring the name of their dog. I am sure those who have owned various four-legged friends over the years remember them with great fondness. My present companion is Flossie, a blue Merle collie. During lockdown we seem to have bonded more than ever, I have valued her company, but she seems to have become more and more demanding. She expects her meals at more or less the same times daily, and fixes her eyes on me, letting me know it is walk time—again! She even stares at me in an evening, hinting it is bed-time and will I leave her in peace (with her bed-time biscuit). A neighbour told me their small dog jumps up on their bed in the evenings, then whines until they come and join it.

I wonder what the most popular dog's name is? My early memories of our farm dogs were of sheepdogs Bonnie, Shep and Cymro (Welsh), also Dovey and Penny. Penny was a most intelligent Jack Russell and quite a character. On my travels, working amongst shepherds, I met a variety of clever sheepdogs—some shepherds had four or five dogs each. One young shepherd had a Mac and a Mirk—tricky when calling out instructions to them when working. I remember a big dog called Coll (after the island) and there was a Fly, a Lassie, and a Glen—to name just a few. I remember a shepherd called Donnie saying he would never call a dog Flossie in case when

he shouted at her when at work his false teeth might become detached!

Old Alastair had Nell, who was rather uncontrollable. I can still recall his frustrated voice shouting 'Come to me Nell, Come to me Nelly while the dog ran around wildly. Didn't he love that dog though. There was a dog called Jock whose one and only contribution to a sheep gather was his bark. His owner would give the instruction "Speak up Jock" and the barking echoed round the hills disturbing the sheep and causing them to start running in the right direction (hopefully).

Some dogs' names were connected with their colour. I remember a dog called Flake (white after snowflake); not a popular colour amongst sheep, so hard to spot. I know a Panda (black and white)—then there was a Jet, Amber, Blue. I memorised a song by Burl Ives when I was young about a dog called Blue. The last verse went—

"When I get to Heaven, first thing I'll do
Is blow on my horn and call for old Blue,
I will say Hello Blue. Finally got here too."

I feel I must mention the dog I had for 17 years before Flossie, another Blue Merle called Mist. I couldn't leave her out.

Of all the dogs' names I have come across, I have only met a Morris once. He is a rescue poodle belonging to neighbours—they changed his name from Boris! Another unique name for a dog in my experience is Ruth—and she lives in Cleobury. *Marian Rees*

Are you buying your first home, moving home or looking to remortgage?

- I personally manage the entire process ensuring you get the perfect mortgage
 - I compare, advise and arrange mortgages from the entire market
- I liaise with lenders, solicitors and estate agents to ensure a smooth process
 - **100% free** - I never charge a fee for my mortgage services
 - Access to highly competitive **life insurance** policies
- I am also a qualified **Will Writer** so contact me to have your Will written

Call me now to find out what you can borrow and your next steps

YOUR HOME MAY BE REPOSSESSED IF YOU DO NOT KEEP UP REPAYMENTS ON YOUR MORTGAGE

01299 549 820 | Stephanie@midasfp.com | www.midasfp.co.uk

Midas Financial Planning Services Ltd is authorised and Regulated by the Financial Conduct Authority



I'm Stephanie

**01299
549 820**

Clarion Clippings - The Local News

THE MAY ELECTIONS

May 6th will be a notable date locally, as we shall have elections for both the Town and County Councils. The first elections for some time and with signs of significant changes in both the town's organisation and our representation at County level. For the first time in many years Madge Shineton will not be standing; she is quite a way over 21 and feels it's time to stand back and let younger people take over. This is an early chance to thank the lady for all the work she has done for this community. She'll be missed.

All candidates should treat this page as an invitation to submit their message to

the electorate. With four known candidates standing for the County seats, they will have a full page for their messages, which must be limited to 180 words apiece; to the editor by April 22nd.

If there are no more than nine candidates for the Town Council, those people will be automatically adopted. It would be far better if we had more, which would make for a proper election, but we must wait and see on that point. Town Council candidates can submit their details for scrutiny, in no more than 150 words, to the editor by April 22nd.

The Clarion wishes all candidates good luck and thanks them for standing.

REPORT FROM COUNTY COURT, TELFORD, MARCH 24TH

This was an action by Stephanie Morrison against Mrs Elizabeth Griffiths in the matter of disputed rent of the premises in Church Street that Ms Morrison took over in 2018 to trade as a coffee and cake shop with catering service. She left at the end of February 2019, having rented the property for one year and being in dispute with Mrs Griffiths about the state of the building.

Ms Morrison was claiming the £625 month's rent paid as a deposit, plus interest and costs to bring the action. Judge Poynton queried the amount of interest listed, £975 when the monthly rent of the shop was £625.

In a detailed cross examination the conditions of the lease revealed that the tenant was responsible for upkeep of the premises, without specific details of just

which premises were involved. The tenant stated that she had asked for flooding and damp to be addressed and could not get satisfactory action from the landlord. Mrs Griffiths, in a later cross examination, stated that she was available to discuss the matters and also stated that holes in the wall had been filled and remade to accommodate shelving.

There was also disagreement about the outer decoration of the premises, which Ms Morrison had painted after what she claimed was a lack of response from Mrs Griffiths; Mrs Griffiths disputed this claim. Photographs of the shopfront were presented by Ms Morrison, disputing that the white painted hardwood frames had needed expensive work.

In a hearing lasting almost two and a half hours the two

parties did not find a basis of agreement. Mrs Griffiths stated that she had presented Ms Morrison with a bill for work to make the premises rentable after her departure, copies of the invoice for work varying from £846 to £946. Mrs Griffiths was unable to present invoices showing the basis of the charge.

Judge Poynton summed up both sides' views and evidence, expressing disappointment that Mrs Griffiths had not provided documentary proof of payment made that was the basis of her invoice to Ms Morrison for repair work amounting to between £846 and £946.

He ordered Mrs Griffiths to pay Ms Morrison £325 towards her deposit refund plus court hearing costs incurred and recorded. The matter of the interest charge demanded he set aside. JR

**Lacon Childe
School**



**YOUR
SCHOOL
LOTTERY**

1

JOIN OUR LOTTERY



2

BOOST SCHOOL FUNDS



3

WIN CASH PRIZES



It's As Easy As



- Tickets cost just £1 a week
- The easy way to help us raise funds
- Local cash prizes every week
- Chance to win the £25k jackpot

To start supporting, visit:

yourschoollottery.co.uk

and search for: **Lacon Childe School**

Supporters must be 16 years of age or older



BAGGINSWOOD

Bagginswood, Clebury Mortimer,
Nr. Kidderminster, Worcs. DY14 8NB

Telephone: 01746 718732

Heath Farm Meats, Bagginswood

Opening Hours

Wed 8am to 5.30pm, Thurs 8am to 7pm, Fri 8am to 5.30pm, Sat 8am to 12.30pm

Straight from Our Farm to Table

We rear & sell all our own beef, pork, lamb & mutton through our shop on farm. We also make our own flavoured sausages, burgers, home cured bacon, gammon etc. No order to large or small.

Hams ● All Poultry ● Honey ● Mawley Milk & Cream ● Ashley's Cakes & Bread ● Jams ● Eggs ● Cheeses ● Apple Juice ● Potatoes ● Meat Pies ● Sticks & Logs

Telephone 01746 718732 with your order to arrange a date & time for collection

Paul Harding



Tree Services

- Tree surgery and felling
 - Woodland thinning & maintenance
 - Hedge trimming & grass cutting
 - Supplier of hardwood logs, kindling and garden bark
 - NPTC certified fully insured. Domestic and commercial work undertaken.
- Tel 01584 890 993 Mob 07970 878 224**



H.C.P.C Number CH22527

Clebury Chiropody Janet Manley

Qualified Chiropodist
MSSCh. MBChA
BSYA (reflex) REIKI Master

Tele:- 01299-272841
Mob:- 07805-268439

Email: janetpmanley@yahoo.co.uk

2, Tenbury Road,
Clebury Mortimer,
Kidderminster,
Worcs.
DY14 8RB

KIDDERMINSTER CARPETS LTD (FORMERLY KIDDERMINSTER CARPET SPECIALISTS)

FAMILY BUSINESS, OVER 35 YEARS' EXPERIENCE
DOMESTIC & COMMERCIAL

COMPETITIVELY PRICED, QUALITY PRODUCTS:
CARPETS, SAFETY FLOORING, VINYL, LAMINATE,
WOOD FLOORING, KARNDAN AND AMTICO

SAMPLES BROUGHT TO YOU AT YOUR HOME OR
BUSINESS AND FREE QUOTATIONS OFFERED

OFFICE: 01299 251 527 MOBILE: 07836 385 022
www.kidderminster-carpets.co.uk

Offering a friendly, flexible and professional service to make your everyday life easier.

- Dog walking at our farmhouse or locally to you
- Pet sitting
- Half day doggy day care
- Overnight home from home for pets
- Home admin
- Light gardening
- Running errands
- Home checks



Everyday Poppins

Giving you a helping hand

Contact us to find out more

amber@everydaypoppins.co.uk www.everydaypoppins.co.uk Call Amber on: 07730 574 368

We are based near Hopton Wafers. DBS checked. Find us on Facebook

Simon Morton in the Garden.

Oh Lordy, he's bought a chainsaw - head for the hills!

The Macho Side of Gardening

Gardening is not generally considered a macho pastime. While Monty Don has a dapper suaveness about him and Alan Titchmarsh wears his wellies with laudable confidence, neither strike you as 'men's men'. They might be active members of the local rugby club, but you get the sense that they'd be helping with the catering rather than being pummelled on the pitch.

The languid nature of gardening lends itself to chaps like Monty, Alan and me, each of us happy in our own little bubble. If we can potter - an activity that becomes more alluring as each year passes - we're more than content. No need for things to be any more rock and roll than that.

Despite my un-macho credentials, I've got some pretty blokey friends. They will briefly feign interest when the topic of gardening arises, but I know that they're just being kind. That said, their ears soon prick up on the mention of two of the blokeiest aspects of gardening - fire and power tools. And yes, you guessed it, I'm rubbish at both.

Burn, Baby, Burn

The art of decent bonfire-ing requires mastery of two elements:

First, patience. The gentle coaxing of a spark into an inferno takes FOREVER. Those of us who don't possess the required level of patience will often turn to accelerants as a shortcut (firelighters - cheating, lighter fluid - downright dangerous). Rarely do either lead to a decent fire, serving only to add to the impatience and sense of inadequacy.

The more frustrating element is some innate mystical understanding of what constitutes perfect fire-building materials, structure and wind direction. These appear to be manly secrets handed down through the generations, only to be shared when the boy-child is deemed ready to take on the mantle of fire-maker. Either my Dad hadn't been let in

on the secret himself (come to think of it, I don't recall many bonfires in my childhood - coincidence?) or it just slipped his mind. Either way, I never got the memo.

Fun with Power Tools

It's almost like my wife doesn't trust me. It took a solid 12 months of assurances before I was allowed to get my hands on a chainsaw. For some reason, she thought that being in charge of a sharpened blade, spinning wildly on a chain as it tears its way through fallen branches, was not my natural habitat. She may have a point - there are countless examples of near misses with drills, hedge cutters and circular saws.

I eventually got my very own chainsaw. Granted, it's small and, when compared to the monster used by my friend, looks like something you'd give a clumsy child to placate them, but it does the job. Unsurprisingly, part of the deal with my wife was covering myself from head to toe in protective clothing - helmet, mask, gloves and chainsaw trousers.

The trousers were the beginning of the end of any potential career in forestry. Excited to get on with some tree-chopping, I tore open the packet and unpacked my new strides. Not wanting to get too sweaty, I stripped off my jeans and, standing proudly in my pants, stepped into the protective clothing. It was only as I felt the cool morning breeze on my posterior that I realised that the trousers were in fact, chaps and, thus, did not come with a backside.

Resembling an overweight middle-aged Chippendales reject, I went in search of my wife to show off my latest fashion statement. The look of horror, bemusement and amusement will stay with me forever.

No trees were felled that day...but I don't think we've laughed so much in a long time.

Simon Morton

FOLLOW US ON FACEBOOK TO STAY UP TO DATE EVENTS



NEW TAPAS MENU EVEN MORE OPTIONS TO CHOOSE FROM.
ITALIAN STONE BAKED PIZZA IN HOUSE OR TAKEAWAY.
01299 27270 the.royal.fountain.inn@gmail.com



TURNERS GATES

bespoke sizes at standard prices



A small family run business specialising in quality wooden gates to suit all entrances.

Visit our website: www.turnersgates.co.uk

Drop us an email: turnersgates@outlook.com

Or give us a call on: 01299 270 965





The days are warming up and the first honey bees have joined the bumble bees among the early nectar-rich flowers in the garden. They love the blue Lungworts and the fragrant flowering shrubs there, while out in the forest there are Wood Anemones, Yellow Archangel and the first Dog Violets to forage from.

We finished the tree-planting last month, and it will be interesting to watch the new trees' progress during the growing season. I can see how those from one and two years ago are getting on, and it's very encouraging. Some of the older ones are nearly 2 metres high and are providing food for invertebrates and cover for birds. The first hatchlings of Blue Tit and Great Tit will soon want feeding, so their parents will be kept busy all through the daylight hours finding caterpillars and other food for them. I hope the forest can keep up with demand as the new leaves grow: the hawthorn in bright green leaf now, ahead of the other trees.



The multi-titled bilberry with tiny pink shaped flowers that distinguish it.

This month the tiny pink bells of Bilberry flowers will appear on the stems of the low bushes. *Vaccinium myrtillus* is its Latin name but it has many British names: whinberry, whortleberry, whorlberry, blaeberry in Scotland, and I've seen wimberry attributed to the Welsh borders. It doesn't have a name from the East Midlands or Anglia because it doesn't seem to grow there. I've been wondering why it is that you find tracts of the forest dominated by this wiry little plant but none elsewhere. I think the answer must lie in the soil: my internet and book research has so far narrowed down its preference to acidic, well-drained soils. It's a plant that thrives in heathlands: a habitat that developed where trees were cleared on poor, acidic soils and grazing animals prevented their re-establishment. Today the area of lowland heath is very much reduced by its loss back to woodland after the abolition of many common grazing rights in the nineteenth century and, more recently, by housing and other development. (Ironically, some of the best surviving heathlands are those used by the MOD as firing ranges). Anyway, the bilberry still manages to occur as a common plant on acid soils and is able to hold on under woodland by coming into leaf and flower early in the season before being shaded out by the tree canopy.

The ewes at Uncllys are due to lamb this month so I'll be keeping an eye on progress and hoping that complications will be few. If you are walking a dog nearby please don't take any chances – put it on a lead until you're well away from the farm. Thanks!

Linda Iles

More Clarion Smalls

GUTTER CLEANING SERVICE

No ladders or scaffolding needed.
Can reach any awkward place.

All residential and commercial

Competitive rates

Call Ian on 07870384096

PAUL LYNCH PLASTERING SERVICES

Recently relocated. Offering all aspects of plastering including making and repairing mouldings, cornices, etc. Fully insured, references available.

07890 049 592

or

01299 272931

HIS & HERS

Dog Grooming Parlour

All breeds and
Cross breeds professionally
Trimmed and Groomed



J. A. Guest

Tel: 07790 796 027

Washing Machine Repairs and Sales

JULIAN BREAKWELL

Telephone 07791 633 746

**Repairs to all makes, including
Bosch, Hoover, Zanussi and
Hotpoint**

**NO CALL OUT CHARGE
FIXED LABOUR COST**

Ever After

- Breakfast club
- After school club
- Holiday club
- "Forest schools" outings
- 15hrs education funding
- 24U funding
- Age ranges: 3 months to 11 years



Day Nursery
Cleobury Mortimer

Please contact us on 01299 272 777
Or Call in to see us anytime.

Friendly, Caring Environment for the Community

Hi everybody, hope you are surviving, torrid times. We haven't been so successful with our charity work since the 2nd lockdown or was it the 3rd, don't know.

Anyway, we are persevering, and have found new outlets, would you believe we took 20 boxes to a charity in Liverpool and 5 lots to various refugees in Kidderminster. So please keep coming with your clothes, children's and adults, soft toys for the Teddy Trust. We are looking for some one to help us with the toys we are given that are broken and need tidying up. So give us a call please.

Collections4charities.com 07976307889

Piano tutor Francis Engleheart

School-aged or adult students, beginner or advanced. Based in Kinlet, but I can come to you. Some day and after-school spaces available.

07710 288526 • fengleheart@hotmail.com

S. L. CARTER

**PROFESSIONAL PAINTER AND
DECORATOR**

**PLASTERING, TILING, COVING AND
GLAZING**

CLEOBURY MORTIMER

TEL: 01299 272868

MOBILE: 07815 483 029

Been here before department: Prince Harry claims that history is repeating itself and comparing his treatment with that dished out to his mother. There certainly has been previous in this area but from an earlier time. The story so far: Driven and ambitious American divorcee meets and seduces nice but dim English Prince, impressing him with her knowledge and experience of wider society. She then marries him, following which, she separates him from friends, family and the world he is used to by taking him into exile in the (ex) Colonies. Add in the baring of their souls on the altar of Oprah (including the obligatory claim of racism) and it looks like bridges have truly been burned. This didn't end well for the Duke of Windsor although at least in this case there was no throne to renounce. I really do hope that this time around there will be a better outcome although it certainly seems clear who the organ grinder is in the relationship and there is little doubt that the Ginge n Whinge roadshow will roll on and on.

Shropshire Council is legendary for its inability to repair potholes but this doesn't seem to apply to repainting white lines. There has been much activity around the back streets of Cleobury lately with any number of these being given gleaming, not to say dazzling, coats of fresh paint (why?). This even extends to painting through some potholes which will make for an interesting pattern when (if?) they are ever fixed. Meanwhile, the High Street disintegrates as you watch it. To add insult to injury, they have just announced a joint project with Kier (oh dear...) and others to fill potholes whilst reducing pollution. Someone has already commented that they were already achieving that by failing to fill them...

Much debate about Carrie (unkindly dubbed 'Carrie Antoinette' by some) Symond's makeover of the PM's flat which is rumoured to be costing £200,000. Apparently, all incoming residents get a £30,000 allowance to do this. Anything over this figure has to be self funded. As Boris is constantly pleading poverty, it has

been suggested that a charity be set up to cover the cost. However, before you put your hands in your pockets, be aware that the Charities Commission has pointed out that a charity must raise money for public good so this wheeze falls at the first fence. Now it appears that Party donors are being asked to step up to the plate. It wouldn't be so bad if the result of the revamp was met with approval but at least one observer, having studied previous work by the favoured designer, has likened it to a 'Changing Rooms' episode gone horribly wrong and resulting in tears and divorce.

I see that the £37 billion track and trace system has been roundly criticised by the Public Accounts Committee who claim that there is no evidence that it has reduced infections. You might wonder why it costs so much to achieve so little but the PAC points out that it employs hundreds of highly paid consultants including a number who are paid around £6000 a day. This makes Shropshire Council's pothole consultant at £1000 a day almost look like a bargain. Still it has made a lot of money for Boris's chums so it's not all bad. It just goes to show that the age old methods of dealing with incompetent personnel are still being widely practised: If someone is useless, sack them. If they are utterly useless, promote them and give them more money.

Poor old Plod. Damned if they do and damned if they don't. The murder of Sarah Everard was a tragedy and mourning her demise is understandable but organising a large non socially distanced gathering to do so? The Police tactics appeared to be heavy handed but I gather this was triggered by the usual suspects. Cue large numbers of politicians and others, all armchair experts on policing tactics, calling for the resignation of Cressida Dick. If everyone who made a mistake was forced to resign, the House of Commons and the Scottish and Welsh Parliaments would be empty.

Ariadne J. Grumpy

NEWSPAPER DELIVERIES



Monday- Saturday

Covers Cleobury Mortimer and Clee Hill

Contact Laura Callwood on 07495 708404

or lauracallwood@outlook.com

WILMAS CLEANING & IRONING SERVICES

Experienced cleaner, very trustworthy and reliable. If you would like your ironing done you can drop to my house. I am available weekdays, and weekend's times/days flexible. References are available upon request.



Please contact me for further details on

07891416477
01299 272 941

Number Nineteen

No.19 Denture Repairs

Dental Laboratory

SPEEDY, QUALITY DENTURE REPAIRS

Cracked/broken dentures repaired the same day.

A 1 HOUR service is available for when time is of the essence, just call to make an appointment .

19 Lower Street, Cleobury Mortimer, DY14 8AL

Email: nevilleweaver@googlemail.com

Phone: 07973856733

All work undertaken by a GDC registered technician

No.19 The Beauty Room

with Jane Weaver



Wash away the aches, pains and stress of everyday life by indulging in a relaxing Swedish massage, any combination of back, shoulder, neck, arms and legs, ½, ¾, 1 or 1½ hrs, or treat yourself to a manicure/pedicure, waxing or tinting.

Telephone consultations available to discuss any personal requirements, treatments available at No.19 or in your own home. Contact Jane on 07968 882269 or email 19thebeautyroom@gmail.com

Just like the lotus flower we too have the ability to rise from the mud, bloom out of

the darkness and radiate into the world!



TOTAL PROPERTY MAINTENANCE

Fireplaces built for multi-fuel burning stoves,
Plastering, Building & General Maintenance

Rob Taylor

Mobile: 07944 074540

Landline: 01299 832734

Email: rptbuilding@hotmail.co.uk

E.PURSLOW & SON LTD

Stone, Gravel, Cement Supplies

Approved Coal Merchant

Calor Gas Stockists

Tarmacadam Specialists

Car Parks and Driveways

Constructed.

TEL: 01299 270314

David Ward firewood



Do you need a dependable consistent quality supply of seasoned or kiln dried hardwood and softwood firewood?

Cut and split to suit and delivered in breathable 1.2-cubic metre bags, so no need to restack.

Small delivery vehicle, fitted with crane, can deliver to most locations and situations.

CALL DAVID TO DISCUSS YOUR REQUIREMENTS:

Mobile: 07866 441154

Alan Smith Aerials

Digital TV Installations.

Freeview aerials fitted and distributed around the house.

Freesat box, dish, and cable supplied and fitted. One off payment, **No contract or subscription required.**

Extra points, Repairs, New fits, Set ups, Multi room.

All work is carried out by a **Local**, fully qualified and insured installer.

01299 270007 or 07970 675728



**DO YOU SUFFER WITH SWELLING OR TIRED ACHY LEGS?
DO YOU HAVE SWELLING OR OEDEMA IN OTHER PARTS OF YOUR BODY?**

**A build up of fluid or oedema can be such a problem & may deteriorate if you ignore it.
There are many causes for oedema and many ways that it can be improved with the appropriate care and treatment.**



Medical Lymphatic Drainage
Treatment- MLD



Mary provides Comprehensive Assessment and a variety of specialist therapies.

Ring for an informal discussion or to book at appointment on 07725598715

Or email lymphtherapy@icloud.com

Mary also provides Bowen Therapy a remedial & holistic therapy for all sorts of joint & health problems.

LymphTherapy

Provides a solution to help you manage swelling and oedema



Therapist: Mary Warrilow, RN, BSc (Hons), QN, Bowen Therapist
Mary is a Registered Nurse and Clinical Nurse Specialist in Lymphoedema & Lipoedema.
BSc (Hons), QN, Bowen Therapist

TRACEY'S KREATIONS

28 High Street, Cleobury Mortimer

FRESH FRUIT AND VEGETABLES DAILY

FREE RANGE EGGS AND LOCAL PRODUCE

FREE DELIVERY

Fruit and Veg Boxes Delivered Daily to Your Door

www.traceyskreations.co.uk

INSTAGRAM FACEBOOK

Telephone: 01299 270943 / 07376 282444

Email: traceyskreation@gmail.com

Birthday Cards - Anniversary Cards

Special Occasion Cards

Ice Cream - Confectionery - Sweet Hampers

Helium Balloons - Toys

FREE DELIVERY

Tele:- 01299-272757 *Hands on Printing* **Email:- clickclick2@hotmail.co.uk**
Mobile 07708 587787

All digital media printed to 6"x4" 5"x7" 8x6" 10"x8"
CANVAS WRAPS FROM 12"x16" - 30"x 20"
ENLARGEMENTS FROM 12X10" TO 24X36"
FROM PHOTO'S, DIGITAL MEDIA & 35mm SLIDES

PASSPORT PHOTO'S ONLY £4-00
WHILE YOU WAIT

MOST VIDEO FORMATS TRANSFERRED TO D.V.D.
or USB or SD cards

PHOTO & VIDEO FILES TRANSFERRED FROM MOBILES TO DVD ETC.

STANDARD 8 - SUPER 8 FILMS TRANSFERRED TO D.V.D. or USB or SD cards
DAMAGED PHOTOGRAPHS RESTORED ETC.

BIRTHDAY AND CELEBRATION BANNERS

Look Who's 50 Today!

VINYL BANNERS - BUSINESS CARDS - SHORT RUN FLYERS
INVITATIONS - ORDERS OF SERVICE

B-W OR COLOUR PHOTOCOPIES
SELECTION OF PHOTO FRAMES
Tradition Studio Portraits and Pet Photo's

INCLUDING VHS - VHSC - SONY 8 - DIGITAL 8 - Hi8 - MINI DV & BETAMAX

REEL TO REEL & CASSETTE AUDIO TAPES & OLD LPs TO CD

43, High St.
 Clebury Mortimer.
 DY14 8DQ

 **LACON CHILDE SCHOOL** 

the future begins here
 Headteacher: Darren Reynolds

1735



Lacon Childe School, Love Lane, Clebury Mortimer, DY14 8PE Tel. 01299 270312 email - admin@lacon-childe.org.uk

LUDLOW SALVAGE
 ~ Est 2017 ~
 Reclaimed Building Materials and Architectural Antiques

Station yard, Station road,
 Woofferton, Ludlow SY8 4AW

T 07805 312168
@ ludlowsalvage@gmail.com
f /ludlowsalvage
📷 /ludlowsalvage

WWW.LUDLOWSALVAGE.CO.UK

Boomerang of Clebury Mortimer **G**
 private hire travel

- Friendly, reliable service
- Local & long distances
- Fully council licensed (up to 12 passengers)
- Airport transfers
- Courier service
- All occasions catered for

Tel: 01299 271257, Mob: 07411 142755, Email: stuart.boomerang@yahoo.co.uk



Homeland Park, Chorley

Residential Country homes for the over 50's

- ◆ 12 month license
- ◆ One pet welcome per home
- ◆ Members of British Home Parks Association

Come and view the new Show Homes and other available plots at the village location of Chorley, Nr. Bridgnorth



Homelands Park, High Green, Chorley, Nr Bridgnorth, Shropshire WV16 6GB

www.homelandschorley.co.uk

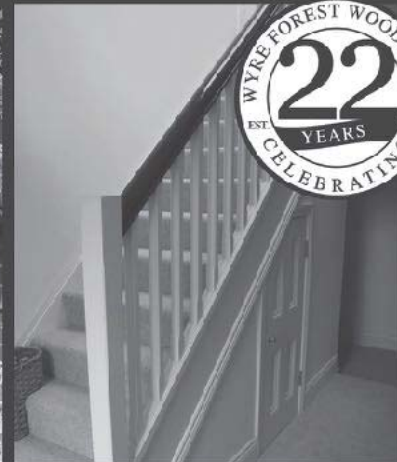
Phone: 01746 718145 Mob: 07980 828311 & 07342 654250



**WYRE FOREST
WOODCRAFT**
purpose made joinery

Specialists in the Manufacture
of Purpose Made Joinery

- Tailor Made Timber Windows
- Traditional and Contemporary Style Timber Doors
- Custom Made Staircases
- Bespoke Conservatories
- Made to Measure Gates



TO SEE EXAMPLES OF OUR FULLY FACTORY FINISHED JOINERY VISIT OUR WORKSHOPS AND SHOWROOM

www.wyreforestwoodcraft.co.uk

01562 68100 | enquiry@wyreforestwoodcraft.co.uk

Oldington Lane | Firs Ind Est | Kidderminster | Worcestershire | DY11 7QN

IRENA

S.A.C DIP. (DIST). N.C.F.E. M.C.F.H.P.
FOOT HEALTH CARE PRACTITIONER



All your foot problems dealt with:-

- Foot health check
- Verrucas etc.
- Corns
- Medical Manicure
- Callus
- Medical Pedicure

Free vascular Doppler Check of your feet

The Old Farmhouse
Button Bridge, nr Bewdley
DY12 3AW



Mobile visits available
01299 841 277
hessins@gmail.com

Cleobury Mortimer Golf Club

At Cleobury Mortimer Golf Club we believe that a really enjoyable golf day takes more than just a great golf course. We make sure that your whole experience, from the friendly welcome in the golf shop to your drinks and meal in our relaxed clubhouse, is all part of a day you'll remember.



Everyone Welcome

Membership available.

Just some of the many benefits of joining Cleobury Mortimer Golf Club

- Access to full length 27- hole golf course
- Opportunity to achieve and maintain a handicap
- Family, Friendly Environment
- Playing opportunities at all times of the week
- A range of competitive opportunities
- Open dawn to dusk 363 days a year.

We look forward to meeting you at Shropshire's friendliest golf club.



01299 271 112 (ext 1)

pro@cleoburygolfclub.com

www.cleoburygolfclub.com



EnergyZone

Integrated Renewable Solutions

HEAT PUMPS FOR CLEOBURY MORTIMER

EnergyZone are one of Cleobury's best kept secrets. We are one of the largest and longest established renewable engineering companies in the UK installing heat pumps since 2003. 14 in house engineers with over 130 years combined experience completing over 1000 Domestic and Commercial systems all over the UK. Based next to Hobsons Brewery in Cleobury we are your local experts in heat pump systems.

Heat pumps are rapidly becoming the standard heating system for all new build properties, as they always have been in many parts of Europe, and the Government is offering a very generous incentive to encourage anybody with an Oil, LPG or Electric boiler to replace this with a heat pump.

Replacing your boiler with a heat pump has many advantages;

- **Lower running costs for your heating - up to 50% lower**
- **No dependence on fuel deliveries**
- **Removal of your oil tank - included in our boiler scrappage scheme**
- **7-year warranty with a 20 to 25-year life expectancy**
- **Government backed Renewable Heat Incentive (RHI) to help cover installation cost over 7-years (available until March 2021)**

What can EnergyZone offer?

Complete design and installation of a heat pump system, including all paperwork required to enable you to claim the maximum Government incentive

Upgrade of your old radiators and hot water cylinder if required

Local support with annual servicing through our EZcare package

With the current Government incentive now is a great time to consider scrapping your old fossil fuel boiler and installing a heat pump that is not only good for the planet but also your pocket.

Call us for a free home assessment from one of our engineers.



Fully accredited installers of the brands above ensuring the correct model is selected for your home

01299 270011

www.energyzone.co.uk sales@energyzone.co.uk



ONE STOP ROOFING

The Flat Roof Specialists

- Rubber, Fibreglass & Felt
- Re-pointing & Chimney Repairs
- Fascias & Guttering



Take advantage of our offer: Replace your flat roof Making EPDM (rubber) your choice for a long lasting, weatherproof & high slip resistant membrane, with a lifespan of 50 years, **get it for the same price as felt**, which only carries a 10 year guarantee!

Replace your flat roof with EPDM (rubber) & add a skylight or lantern, giving extra light to your room starting **from as little as £400!!**

Freephone 0800 0855277 * 07538 471274

www.onestop-roofing.co.uk

onestoproofinguk@gmail.com

Family business est. 35 years.
All repair work undertaken

Proud members of
Checkatrade.com
Where reputation matters

CLEOBURY SEAFOOD & FREEZER CENTRE

6 Newhouse Farm - Tenbury Road - Cleobury Mortimer

01299 271345

Ready Meals

*We stock a wide range of ready meals, from the ordinary to the extra ordinary !
Plus a range of Vegetarian, Gluten Free and Vegan meals.*

Mr Dave's

*Meat, Chicken, Prawn and Vegetarian Balti, Madras Curry
Mr Dave's extra large naan, plain and garlic & coriander.*

Fish

*Cod, Haddock, Plaice fillets, Sea bass, Lemon sole, Cod Loins, Smoked Haddock.
Battered & breaded fish fillets. Young's Jumbo Cod Fish Fingers.(Very Popular)*

Seafood

*Raw king Prawns, Squid, , whitebait, cooked tiger prawns, scallops, seafood cocktail.
Hot & Spicy Prawns, Breaded Cod & Plaice Goujons*

*New Fish Cakes Thai Style Cod & Prawn, Smoked Haddock, Mozzarella & Spring Onion,
Sea Bass, Cod, Lime & Ginger.*

Fruit and Vegetables

Potato Products

Bannister Jacket Potatoes, Oven chips, Sweet Potato Fries Twister Fries, Hash Browns, Spicy Wedges

Chicken Products

Southern Fried Breaded Chicken Steaks, Breaded Chicken Goujons, Chicken Nuggets, Chicken Bites.

Gateaux for all occasions

BENNETTS ICE CREAM

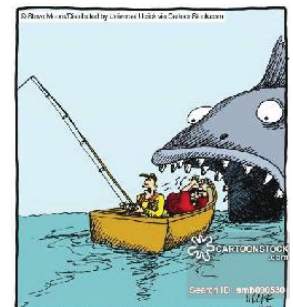
Opening Times 9am to 4.30pm Mon to Friday. Saturday 9am to 12

Visit our web site www.cleoburyfreezercentre.co.uk

Cleobury Clarion - Page 50 - March 2021



"We tried artificial flies. We tried lures.
We tried live bait. Nothing works ...
it's like they're psychic!"



"Blood-curdling screams. Hayes, will
do nothing to help us catch a fish."

April 2021 CMTC Report

I think that everyone is looking forward to getting back to some kind of normality and our community have really pulled together over the last year, but we must still be careful and follow the guidelines as it is not over yet, as other countries are finding out. We had to cancel the Festival for this year but hopefully next year we can make up for it. Please remember that the Town council is there to offer support and advice when ever needed.

We are still continuing with all the projects we have ongoing as stated in the last Clarion report and welcome any new project ideas for the future before we plan our funding so if you have an idea then please bring it to the Town council at one of the monthly meetings or by contacting us in the normal way.

The hard work of planting the spring bulbs is making a lovely show in the QEII area and we see more people enjoying the walk through the park. We are so lucky to have the places around us to get out and enjoy the countryside. Please however use the bins provided for any litter and dog owners please pick up your dog's mess. We are very thankful to the volunteers that help keep our community tidy and we are actively looking for those that do not.

The CCTV system continues to help the community and the Police, especially after some young drivers decided to use our town as a racetrack. We supplied footage and a list of number plates to the Police for them to action. We receive incredibly positive feedback from the Police about our CCTV and in situations like this, we can work together to help keep people safe. Whilst not continuously monitored, the CCTV footage is available when needed.

We continue to be humbled by the community support for those less fortunate and struggling in our community, not just in Cleobury but surrounding parish communities. The Foodbank is a valued recipient of the generosity to help others. If you know anyone struggling, please tell them about us. You do not need to be referred, just turn up at the Market Hall on a Friday morning 9.30am to 11.30am.

We are thankful that the Newbridge corner has been resurfaced. The new tarmac along with the new warning sign should help to improve the safety at what has been a dangerous corner. The speed limits are still being looked at and hopefully the Town Council recommendation to extend this further up the hill will be followed.

The Annual Parish meeting has had to be changed this year to a virtual meeting on April 17th at 6.15pm to listen to some community groups and organisations that can share with us how they are doing. Hopefully, next year we will go back to the exhibition stands that we enjoy attending. Please look out for the Agenda on our website and Notice board by the Zebra crossing with the link to join the meeting.

Please support our local schools and teachers as they are doing all they can to keep themselves and their students safe and they have our respect with all front-line staff, and they need our support. We did take action to close the Play area for an hour, which we did not really want, and the only losers were the children. There are not only adults with underlying health issues but also children so please be respectful and mindful of some anxiety with the way the outdoor areas are enjoyed. If it is busy, please go back later.

Finally, please stay safe and be kind to others as you would like them to be to you. Life is precious and we all want the same thing, to be happy, enjoy what we have and look after those we love. Everyone has problems but together we can make a big difference being there for each other. Keep up the good work caring for what we hold dear.



M Sheehan Town Clerk
Cleobury Mortimer Town Council
www.cleobury.org.uk



KINLET C OF E PRIMARY SCHOOL

Love to Learn – Learn to Love



- Outdoor play areas
- Small family atmosphere
- Kind – Inspire – Nurturing – Learning – Eco-friendly -Teamwork

www.kinlet.shropshire.sch.uk

admin@kinlet.shropshire.sch.uk

Telephone: 01299 841210

www.atriumhereford.co.uk

ATRIUM

HARDWOOD

sales@atriumhereford.co.uk

**Manufacturers and Installers of Bespoke Hardwood Orangeries,
Conservatories, Windows and Doors.**



The Old Foundry, Kington, Herefordshire HR5 3DA

Tel 01544 231769

Lower St Garage

7 Lower St, Cleobury Mortimer. DY14 8AA



- M.O.Ts on cars, motor bikes & small commercial vehicles
- Tyres, Tyre fitting,
- Puncture repair and Tracking.
- Diagnostics, Air conditioning
- Welding.
- Service and Repairs to most vehicles.
- Delivery and Collection Service Available

Contact The Team at Lower St Garage on: 01299 270208



Cleobury Mortimer Benefice Church services throughout the Benefice

**EASTER DAY SERVICES
THROUGHOUT CLEOBURY BENEFICE
SUNDAY 4th APRIL 2021**

St Mary's, Cleobury Mortimer 10.00am
St Michael and All Angels', Hopton Wafers 9.30am
St John the Baptist, Doddington 11.15am
All Saints', Neen Sollars 11.00am
St George's, Milson 11.00am
St Mary's, Neen Savage 11.15am
St John the Baptist, Kinlet 10.00am

St Mary's Cleobury Mortimer

Sunday 11th April – 10.00am Eucharist

Sunday 18th April – 10.00am Eucharist

Sunday 25th April – 10.00am Eucharist

St Michael and All Angels', Hopton Wafer

Sunday 18th April – 9.30am Eucharist

St John the Baptist, Doddington

Sunday 18th April – 11.15 Eucharist

All Saints', Neen Sollars

Sunday 11th April – 11.00am Lay Led

Sunday 18th April – 11.00am Lay Led

Sunday 25th April – 11.00am Eucharist

St George's, Milson

Sunday 18th April – 11.00am Eucharist

St Mary's, Neen Savage

Sunday 18th April -18.00pm Evening Prayer


Sunday 25th April – 11.00am Eucharist

St John the Baptist, Kinlet

Sunday 11th April – 18.00pm Evening Prayer

Sunday 25th April – 11.00am Eucharist

The Church Office is open Tuesday and Thursday from 9.00am-15.00pm
Contact details: Grace Johnson cleoburychurch@hotmail.com
Tel: 01299 272916



LUDLOW FIREWOOD

~ Est 2019 ~

Suppliers of Premium Grade Ready
to Burn Firewood, Beautifully Crated
and Delivered to Your Door



T 07805 312168 or 07974 495803

@ ludlowfirewood@gmail.com

Instagram /ludlowfirewood

Facebook /ludlowfirewood

Station yard, Station road, Woofferton, Ludlow SY8 4AW

WWW.LUDLOWFIREWOOD.COM

Also available in Mini Crates and
Barrow Bags to cover all your
access requirements.



Richard Haines The Worcestershire Chimney Sweep

- ◆ Traditional & Power Sweeping Services
- ◆ Certified Chimney Sweep
- ◆ Insurance Recognised certificate issued



M: 07752 116629 T: 01584 781358 E: lostcity5@hotmail.co.uk

www.theworcestershirechimneysweep.co.uk



Booton Brothers



Rich: 07445298747

Mike: 07853225401

bootonbrothers@outlook.com

All building work undertaken

This month I want to give you more insight into the workings of scams. First is a telephone scam that has a common process and outcome. The process involves the use of computers and telephone lines and the outcome is inevitably the victim's disclosure of personal data or loss of money.

It's all done in call centre which can be anywhere in the world. The scammers program a computer to call a range of numbers e.g. 0230 0000 0000 to 0230 0000 9999 then the computer starts dialling. If the computer gets a number unobtainable or engaged tone or the numbers rings out unanswered, the computer program just moves on to the next number. If the number called picks up, the program switches to a scripted message. This can be a variety of messages purporting to be from a Government agency such as HMRC, DVLA, TV Licensing, the Police or perhaps a bank or financial institution. The message can sound very convincing, the voice can sound very well spoken or with authority. The message can be polite or sound very threatening. The idea is to convince you to respond by pressing a number on your phone keypad to be connected further. If you do, you are immediately transferred out of the computer program to a 'real' person who will then take the story to the next level and attempt to complete the scam. This usually requires a financial payment 'to make the problem go away'. In almost every case the payment requested is not large, so the victim, will agree to provide credit or debit card and personal details over the phone. Providing these details are enough for a scammer to clone your identity, your credit/debit card and relieve you of considerably more money either by bank transfer or purchase using your card details. There are some features of this scam that should alert you immediately: the caller will not address you by name simply because they don't know your name (unless you give it to them). The second thing is that Government agencies, the Police or Finance institutions NEVER call you directly. So if the initial recorded message identifies themselves as one of those, **THEY ARE NOT!** Hang Up immediately. The final message here is **NEVER** press a suggested button on your phone. Hang Up immediately. Modern computers can get through hundreds of thousands of numbers very quickly. So if you hang up the computer just moves on. I have had cases where people have had the same number call them more than once, usually different days but it can be the same day. This is still a scam and the scammer's computer can simply cycle round the same set of numbers and hit on one that did not come up before.

Another example of a phone scam is a 'live' person calling you. Here's an example that came to me very

recently. I was impressed with how convincing this scam could sound to even the most aware of people.

The victim receives a phone call on their landline from BT, informing them that they were to be disconnected because of an unpaid bill. The caller demanded payment immediately of £31.00 or it would be £118.00 to re-connect at a later date. You may have your landline through Virgin or Sky or someone else, but these companies use the BT infrastructure to provide the telephone landlines to your property and pay BT for the service. Therefore, having someone call from BT to you directly may not initially sound out of order. In this example the victim asked the caller's name - he gave it as a very 'English' John Peacock but with a very non English accent & phone number 0800 0800 152.

When the caller realised the victim didn't believe his story, he offered to demonstrate that he was from BT. He told the victim to hang up and try phoning someone - he would disconnect the victim's phone to prevent this. It appeared that HE DID!! The victim's phone sounded dead. The caller then phoned back. Very pleased with himself, he asked if that was enough proof that he was with BT. When asked how this payment was to be made, the scammer said by credit card.

The victim said he didn't know how his line had been disconnected, but had no intention of paying up, he didn't believe the caller worked for BT at which point the scammer hung up. The victim dialled 1471 and it came up as number withheld so he phoned the 0800 number the scammer had given him, - it came up as not recognised. The fact that the phone does go off could convince some people.

How is it done? This is good but not that clever. The scammer gave a modified number - it should have been 0800 800 152, a genuine BT Business number. Cutting off the line is very simple, you hang up, he stays on the line with the mute button on and you can't dial out - but he can hear you trying. This is because the person who initiates a call is the one to terminate it. When you stop trying to call out, he disconnects and immediately calls back. **You could almost be convinced!** The sad thing is that it is so simple that it will certainly fool many. By the way this is not about getting the payment of £31 or whatever, it's about getting the credit card details which include the security number, to be used for larger purchases. The police and fraud reporting systems are aware of this scam. It's only just started apparently, but it is escalating. Their advice was to let as many people as possible know of this scam. So please make as many friends/family aware of this. Next month, some other common scams.

Nigel

We are a local Shropshire based Chartered architectural practice with lots of experience in all kinds of residential projects large and small. We are friendly and approachable looking for clients who value design quality, experience and expertise.

Our Architectural Design Services include

- Design & Feasibility Studies
- General project Advice
- 3D Modelling
- 2D CAD Drawing
- Planning Advice and Submissions
- Building Regulation Applications
- Tender & Construction Drawings
- Contract & Project Management

SEVERN

architects

RIBA 
Chartered Practice



The Guard House
Forest Park,
Cleobury Mortimer
DY14 9BD

Check us out on www.severnarchitects.co.uk
or facebook.com/severnarchitects

Contact Julie Widdowson on Tel:07825 759484 for your free consultation

KIDDERMINSTER

SELF STORAGE AND REMOVALS

STORAGE

Free insurance . Flexible Terms
Fixed Price Guarantee . No hidden costs

REMOVALS

Professional Removal Service
Est. over 25 years

PACKAGING MATERIALS

Boxes, Bubblewrap, Tape Etc. for sale
Free local deliveries on orders over £20

01562 744088

www.kidderminsterselfstorage.co.uk

Unit 11 Finepoint Way, Stourport Road, Kidderminster DY11 7FB
info@kidderminsterselfstorage.co.uk



Cleobury Community Hub

It's hard to believe it has now been over a year since the Hub was last open for "normal" service. As we pause to reflect on the sadness and struggle of the past year, we also look at the year ahead with hope and excitement.

News and Events

In line with government guidance we are **re-opening** the Hub for takeaway drinks and ever popular Mawley Milk refills. The hub will be open **9:30-13:00 on Monday, Tuesday and Friday**. We look forward to seeing you soon!

Following the proposed plan for the lockdown easing, we will then be open on **12th April** for groups of 6, or two households, to enjoy a drink and catch up on our new decking. (With clear one way systems and spacing to ensure we use our government grants to remain covid secure).

When you first return to the Hub you can't help but notice the now completed (and amazing!) purpose built climbing/bouldering wall at the end of the building – named Climb 61. Toddler, kids and youth sessions will start running in April – we are just finishing off the last bits of paperwork before confirming a start date, so please keep an eye on our social media for further details.

FB @CleoburyCommunityHub / Insta @saintmarysyouthproject

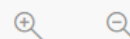
As always (and we know we say it every month!) but a genuine thanks goes to you all for your understanding, support and shared excitement of the work of the Community Hub. We look forward to becoming a regular fixture in your weekly diaries again.



CCH COFFEE SHOP TAKEAWAY AND MAWLEY MILK REFILL

- **MONDAYS - 9:30AM - 1PM TAKEAWAY**
- **TUESDAYS - 9:30AM - 1PM TAKEAWAY**
- **FRIDAYS - 9:30AM - 1PM TAKEAWAY**

NB These times are until 12th April





HOBSONS BREWERY

Enjoy Free Local Delivery from Hobsons!
Available every weekday except Monday.

Call us by 3pm the day before you'd like delivery.

Hobsons are offering the following for local delivery:

Bottles

12 x 500ml Hobsons Beers or Oldfields Ciders: £23.00

Minimum order of 2 cases - full range available.

Polypins (beer in box)

18 pint polypin: £32.95

36 pint polypin: £57.95

Call us for range of beers available.

Hobsons Brewery, Newhouse Farm, Tenbury Road, Cleobury Mortimer, DY14 8RD

TO ORDER CALL:

01299 270837

Your order and payment will be taken over the phone, then the Hobsons van will deliver to you!



Gilbert Carter

Specialist Joinery

- Built in Wardrobes
- Double Glazed Wooden Windows
- Staircases
-

www.gcartersmartjoinery.com

**01299
270626**

Qualified tradesmen, fully insured

BOOK YOUR
MOT WITH US



LEWIS MOTORS KINLET

📞 01299 841 391



SERVICING & REPAIRS TO ALL MAKES & MODELS

- Clutches & Cambelts
- Exhausters, Batteries & Tyres
- Wheel Alignment
- Diagnostics
- Recovery
- Welding

Follow us on Facebook: [LewisMotorsKinlet](https://www.facebook.com/LewisMotorsKinlet)

Community Contacts for Clarion Readers

CEMETERY ADMINISTRATOR	Theresa Parfitt	07703 965 064	theresa.25016@hotmail.co.uk
CLEOBURY COUNTRY CENTRE		01299 272300	In Love Lane, 9 to 5 Mon to Fri.
CITIZENS ADVICE		08444 991100	Advisors on line 10.00 to 4.00
CLEOBURY CARERS	Janet Manley	01299 272841	
CLEOBURY COMPASSIONATE COMMUNITIES	Katja Ward	01299 270018	10.00 to 12.00 Weds
CLEOBURY MORTIMER LIBRARY		01299 272301	Open 9 to 7 Mon, 9 to 5 Tues/Fri and 10 to 1 Sat.
LOCAL POLICE	Constable Anne O'Leary		ann.oleary@westmercia.pnn.police.uk
CLEOBURY MORTIMER GUIDES	Dorothy McBride	07761 976610	
CLEOBURY MORTIMER SCOUTS	Lowri Hughes		cleoburybeavers@gmail.com
CRIMESTOPPERS		0800 555 111	Free Police contact. Talk in confidence, to report any crime.
DOMESTIC VIOLENCE HELPLINE		0800 783 1359	Women's Aid, 24 Hour support:
HOME FROM HOSPITAL		01584 878046	Help over the first weeks back home from Age UK
MARKET HALL	Ali Sheffield	07752 542 853	markethall@cleobury.org.uk
MEDICAL CENTRE		01299 270209	Out of surgery hours, use the Shrop Doc Service.
SHROP DOC		111	Service available evenings and weekends
THE PHARMACY		01299 270219	Closes for half day on Saturday. Delivers prescriptions
NEWLIFE CHURCH	Pastor E Stirrup	01562 630595	Sunday services at 10.30
NIGHTINGALE NURSING FUND	Rosemary Abbiss	01746 718451	
TOWN COUNCIL	Clerk Matthew Sheehan	01299 271154	Cleobury Country Centre 9 to 2 pm, Mon to Fri. www.cleobury.org.uk . Council meets in the Centre on the first Monday of the month
POST OFFICE		01299 270211	In the Select and Save Grocery Store, Church Street
SAINT MARY'S YOUTH PROJECT	Mark Greaves	07828 116810	mark.stmarys@live.co.uk
SHROPSHIRE COUNCIL		0345 678 9000	
SOUTH SHROPSHIRE YOUTH FORUM			richard@ssyf.net .
VOLUNTARY CAR SCHEME		01299 666119	Mandy Smith
WASTE DISPOSAL		0345 678 9007	The contractor is Veolia
WATER SUPPLY EMERGENCIES	Severn Trent	0800 783 4444	

Collect the Clarion in Cleobury from: Select and Save Grocery, Butler's Store, Cleobury Cafe, The Severn Hospice Shop, Mid Counties Co-op, Purslows, The Library and Swift's Bakery Tea Room.

Out in Cleobury Country at: Heath Farm Meats, **Bagginswood;** **Clee Hill Stores;** The Village Store, **Cleobury North;** **Clows Top Stores;** The Sun and Slipper, **Mamble;** **Hopton Bank Service Station;** Bennetts End Inn, **Knowbury;** **Ludlow Library;** **Mawley Oak Garage;** The Colliers Cafe & Shop, **Rock;** The Fighting Cocks, **Stottesdon;** The Duck Inn, **Chorley;** The Live and Let Live, **Neen Sollars;** The Eagle and Serpent, **Kinlet;** Parker Motors, **Ditton Priors.**

Copies are also available from the Parish Churches in: Cleobury Mortimer, Bayton, Doddington, Hopton Wafers, Milson, Neen Savage and Neen Sollars.

Missed your Clarion? Cleobury Mortimer Library keeps the current month's copy on file and all back issues are available to read as pdfs from www.cleoburyclarion.co.uk.

DEADLINE FOR THE APRIL ISSUE:MARCH 22nd

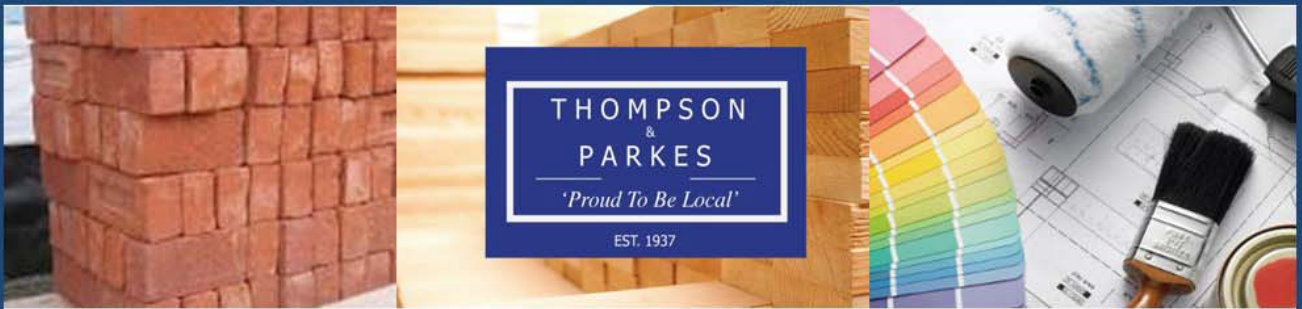
Editor and Advertising Sales: Jim Reynolds, 4 Childe Road, Cleobury Mortimer, Shropshire

DY14 8PA. Telephone: 01299 270642 Mobile: 07410 977 212

E-Mail: editor@cleoburyclarion.co.uk or uncle.jim@icloud.com

The Clarion On The Web: www.cleoburyclarion.co.uk

Printed by Badger Print and Design of Shifnal, 01952 730511



Your local specialist supplier of
Insulation, Timber, Plywood and all Building Materials

THOMPSON & PARKES

SANDSTONE - Best offer locally!

Luxurious natural sandstone Raj Blend 22mm calibrated Indian Sandstone paving perfect for any garden or patio
12.36m² per crate - 3 mixed sizes £16.00 /m² + VAT £19.20 /m² inc. vat

CALL NOW!



Proud to be Local

www.thompsonandparkes.co.uk

Stocking and Delivering all Your Building and DIY Materials

Kidderminster 01562 745881
Oldington Trading Estate DY11 7QP

Oreton 01746 718414
Clebury Mortimer DY14 0TH

Stourport 01299 534545
Minster Road DY13 8AB